



CRESTLINER

FORGED WITH STRENGTH. DEFINED BY DURABILITY.

2020 PONTON CATALOG



LAUNCH A PERFECT DAY.

Crestliner's wide range of pontoons and multiple floorplans for fishing or cruising allow you to create your perfect day on the water, at any price point. From the plush comfort of the Rally DX series to the simple versatility of the Sprint, there's a pontoon ready to build new memories year after year. The expert craftsmanship and durability of Crestliner is evident from bow to stern in every pontoon we build, and it's exactly what you should expect from our nearly 75 years of proficiency in creating comfortable, durable pontoons. So grab some friends and family, take the helm and create a new set of lasting traditions.





240 Rally DX



240 Rally



200 Sprint



THE **CRESTLINER**® ADVANTAGE

FORGED WITH STRENGTH. DEFINED BY DURABILITY.

We only use top-of-the-line materials and advanced construction methods to build our pontoons, separating Crestliner from the rest of the pack. Our commitment to craftsmanship ensures every Crestliner pontoon is built with a singular purpose: improving every moment spent on the water.

Every pontoon starts with a solid foundation built from high-grade sheets of aluminum that are rolled into durable pontoon tubes. To add structural and torsional strength, riser brackets and a crossmember system are welded to each tube, creating a strong and durable sub-structure. The result of this engineering is a stable, confident and comfortable ride—a signature Crestliner advantage.

1 REINFORCED PONTOON TUBES

Each pontoon's tube chambers overlap and are locked together with a fully-welded seam that creates a rock-solid bond. Baffles are welded into each chamber for added strength and a tighter seal. In the event of a puncture, the sealed chambers keep the pontoon afloat.

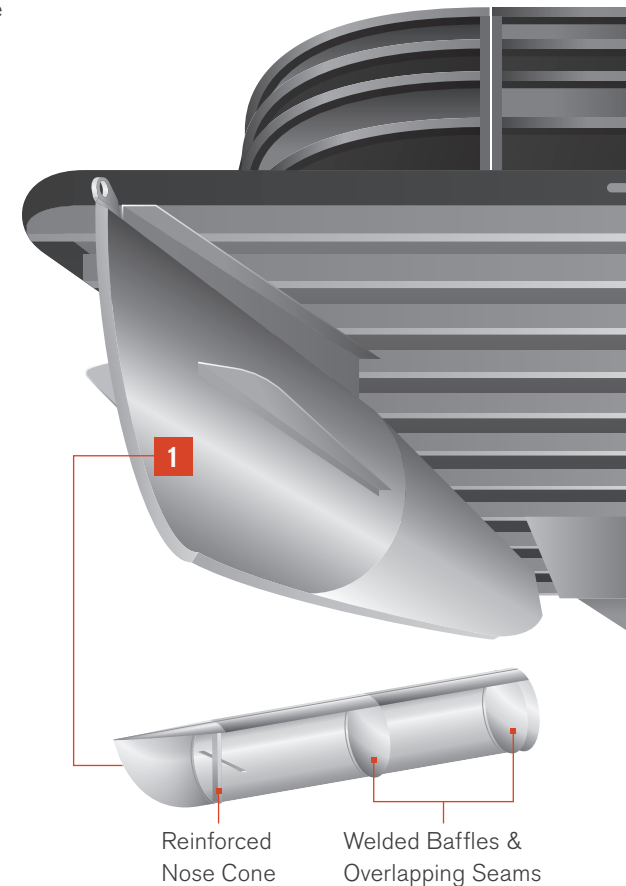
2 TORSION CONTROL RISER BRACKET

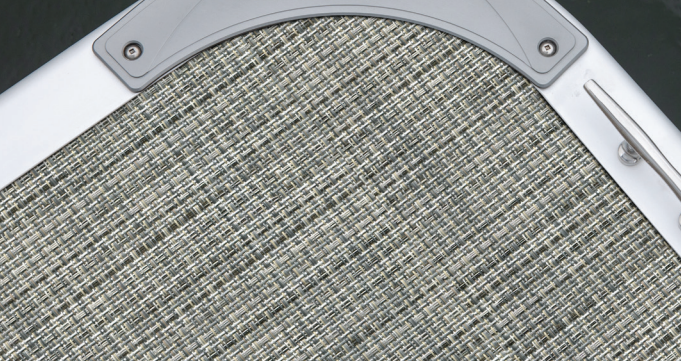
The Rally series features a unique concave design on its torsion control riser brackets. This allows the brackets to absorb the impact of waves and rough water while reducing stress on the tubes and deck, ensuring a durable connection point.

3 OPTIMIZED CROSSMEMBER DESIGN

The crossmembers are optimally spaced on the riser brackets to provide calculated support on weight-bearing loads where it's needed. Adhesive sealing tape is applied on top of every crossmember creating a cushion and acting as an insulator from waves or rough water.

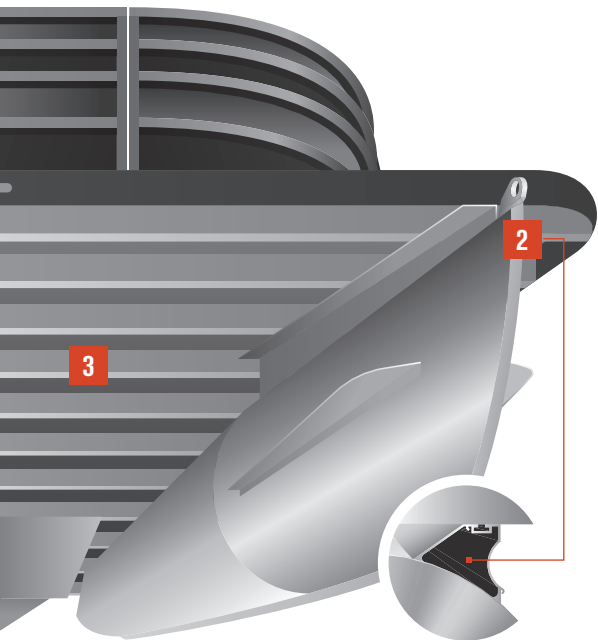
Not all processes, features and statements apply to every Crestliner pontoon model.





MARINE-GRADE DECK

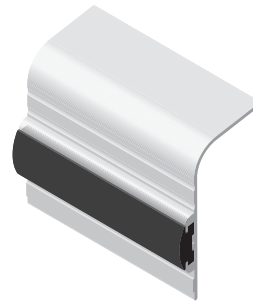
The marine-grade deck is secured to crossmembers using Tek® screws. Unlike bolts that can stretch and loosen over time, Tek screws create a solid and secure deck. Urethane sealant is used on wood seams to prevent water penetration.



Torsion Control Riser Brackets

RUB RAIL SYSTEM

The crossmembers extend near the rub rail providing additional support in case of impact. The rub rail system will take the abuse of impact, helping protect the structural integrity of the deck.



PREMIUM FEATURES

Every Crestliner pontoon comes standard with a feature-rich helm, ample storage and a wide array of comfortable seating options for your guests. With the ability to upgrade features including audio, seating and flooring, you'll always ride in style.

LIMITED LIFETIME WARRANTY

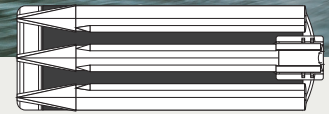
Receive a limited lifetime warranty on pontoon tubes, crossmembers, decking, motor mount and fence rails. Plus, a 5-year bow-to-stern warranty on virtually everything else. It only gets better from there: Crestliner's warranty transfers to future owners. (See warranty for details)

ENDURING QUALITY

At Crestliner, integrity and passion drives every decision, from the builders who make the pontoons to the owners who use them. We take pride in our generations of engineering innovation—designing pontoons that last generations too.



THREE TUBES TO UPGRADE YOUR PERFORMANCE.



V3 ACTION PACKAGE* Available on Rally DX / Rally Only

The V3 Action Package takes pontoon performance to the next level with a third tube for increased speed and watersports opportunities while adding V-hull stability. This full-length center tube adds buoyancy and rigidity, allowing you to add a larger horsepower motor, increase passenger capacity, and give you greater control in rough water.

Reinforced Nose Cone for Rough Water

Increased Fuel Capacity

Full Aluminum Underdeck Skin

GPS-Driven Speedometer

Full-Length Lifting Strakes

(included on Rally DX models only)

(included with 27" diameter tubes only)

V3 SKI PACKAGE* Available on Rally DX / Rally Only

The V3 Ski Package delivers on all of the performance features of the V3 Action package, adding the stainless steel ski tow bar and massive in-floor storage for skis and boards.

*Available with 25" or 27" diameter pontoon tubes

240 | 220 | 200

RALLY DX

RECREATION AT ITS FINEST.

Rally DX puts refined performance at the center of your experience. With plush pillow top furniture, seating for up to 16, a deluxe finish and chrome accents, it's easy to see what makes these pontoons exceptional. With three lengths and five configurations, the perfect pontoon is within reach. Fishing, skiing or cruising, the Rally DX is made to elevate every day on the water.



240 Rally DX Center Walkthrough Dual Helm (CWDH)



KEY FEATURES



PILLOW TOP CHAISE LOUNGE FURNITURE

Plush, pillow top chaise lounges with storage below offer great comfort, style and versatility for every layout. (Not available on FS floorplan)



PREMIUM HELM STATION

The console's sleek design is packed with features lit rocker switches, space for 7" electronics, premium aluminum polished steering wheel with tilt steering, and much more.



PILLOW TOP HIGHBACK RECLINING HELM CHAIR

Reclining pillow top highback helm chair provides maximum versatility and comfort. Includes swivel base, slider and armrests.



TELESCOPING LADDER

Telescoping stainless steel four-step ladder provides extra support for getting in and out of the water.



220 Rally DX Fish & Cruise (FC)



200 Rally DX Fish & Cruise (FC)

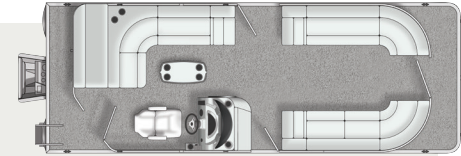


240 Rally DX Center Walkthrough Dual Helm (CWDH)

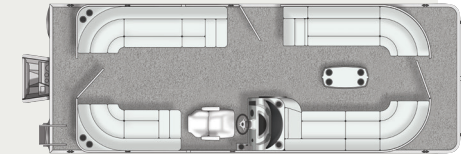
240 | 220 | 200

RALLY DX

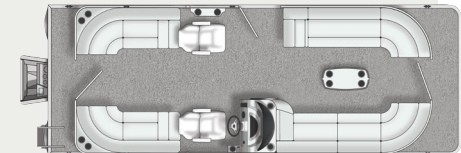
FLOORPLANS



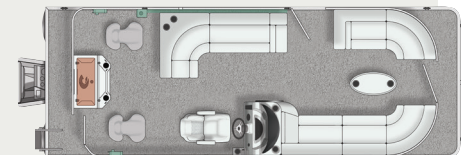
CRUISE (CS)



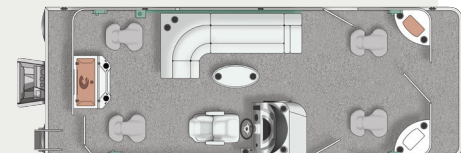
CENTER WALKTHROUGH (CW)



CENTER WALKTHROUGH DUAL HELM (CWDH)



FISH & CRUISE (FC)



FISH (FS)

RALLY DX

MORE FEATURES AND OPTIONS

Pro Fish Seats (FC, FS)

Wood Grain Table w/Drink Holders

Stainless Steel Flip-Up Cleats

MB Quart® Stereo w/ Four Speakers

Premium Aluminum Polished
Steering Wheel w/Tilt

3D Chrome Logo

GPS Speedometer

Docking & Courtesy Lights

Tube Accent Graphics

Raised Helm*

Changing Room*

V3 Action & V3 Ski Packages*

*Optional

See pages 10-13 for additional features, options and floorplans.

240 | 220 | 200

RALLY

ALL-AROUND ENJOYMENT.

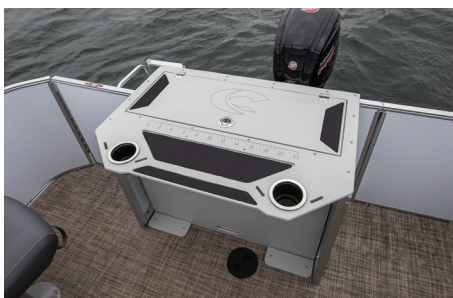
Our Rally pontoons are designed to deliver the ideal combination of performance and relaxation for fishing, skiing and cruising. With three lengths and five layout options, you can create the perfect pontoon to suit your family and friends. The Rally series comes with seating options for up to 16 people, so whatever you do on the water, you'll do it in comfort and style, surrounded by those closest to you.



240 Rally Center Walkthrough Dual Helm (CWDH)



KEY FEATURES



FISH STATION

Fully featured fishing station includes a 15-gallon livewell with light and pump, washdown system, throw tray, tool holder and two drink holders.



HELM STATION

Integrated helm station includes lit rocker switches, three drink holders, 12V power outlet, fuel, tachometer and trim gauges, aluminum polished steering wheel, throw tray, windscreen and additional storage below. (Shown with optional locator)



STERN CHAISE LOUNGE FURNITURE

Chaise lounges with storage below offer great comfort and versatility. (Not available on the FC and FS floorplans)



LOWBACK HELM CHAIR

Cruise in comfort with the lowback helm chair. Comes standard with swivel base, slider and armrests.



200 Rally Fish (FS)



220 Rally Fish & Cruise (FC)

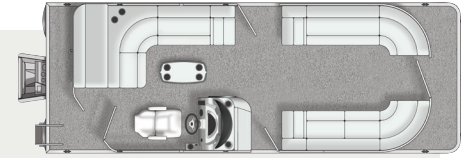


240 Rally Center Walkthrough (CW)

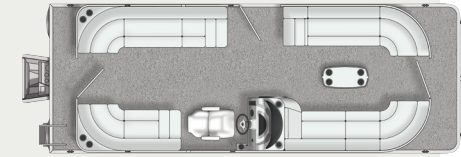
240 | 220 | 200

RALLY

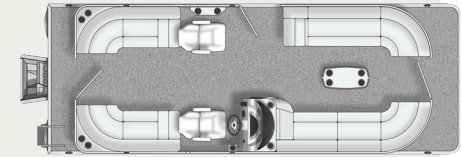
FLOORPLANS



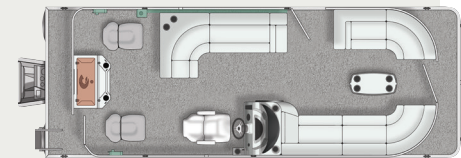
CRUISE (CS)



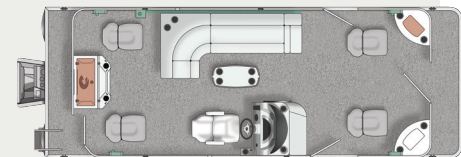
CENTER WALKTHROUGH (CW)



CENTER WALKTHROUGH DUAL HELM (CWDH)



FISH & CRUISE (FC)



FISH (FS)

See pages 10-13 for additional features, options and floorplans.

MORE FEATURES AND OPTIONS

Deluxe Fish Seats (FC, FS)

Bimini Top

Stainless Steel Cleats

MB Quart® Stereo w/ Two Speakers

Aluminum Polished Steering Wheel

Table w/ Drink Holders

4-Step Ladder w/ Platform

V3 Action & V3 Ski Packages*

Upgraded Flooring*

Changing Room*

*Optional

200 | 180 | 160

SPRINT

VALUE YOUR FUN.

The Sprint pontoon is ideal for boaters looking for value without compromising versatility. The Sprint features three lengths, two configurations and seats up to 11 on comfortable lounge furniture, so you can bring family and friends along for the ride. So drop a line. Soak up some rays. The Sprint delivers exactly what you're looking for, every time you take the helm.



200 Sprint Cruise (CS)



KEY FEATURES



BOW LOUNGE FURNITURE

Perfect for relaxing in the sun or drying off after a refreshing swim, the bow lounge furniture comes with drink holders and below-seat storage. (CS Only)



DELUXE SEAT

Ride in comfort with Deluxe helm and passenger seats complete with swivel base and fold-down back. In addition, the FC floorplan adds two more in the bow so you can drop a line from every angle.



15-GALLON LIVEWELL

Conveniently located in front of the console, the bow 15-gallon livewell is aerated to keep your catch fresh. (FC Only)



HELM STATION

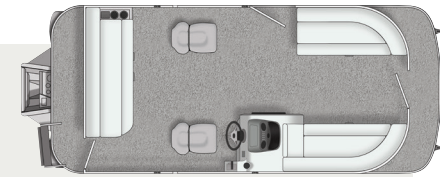
A modern helm station provides quick access to storage and conveniently located rocker switches. Easy-to-read gauges and room to mount electronics. (Shown with optional locator)



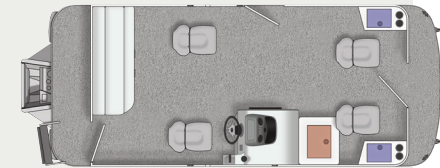
160 Sprint Fish & Cruise (FC)

200 | 180 | 160
SPRINT

FLOORPLANS



CRUISE (CS)



FISH & CRUISE (FC)

See pages 10-13 for additional features, options and floorplans.



180 Sprint Fish & Cruise (FC)



200 Sprint Cruise (CS)

MORE FEATURES AND OPTIONS

Helm & Passenger Deluxe Seats

4-Step Ladder w/ Platform

Bimini Top (Black)

Three Gates (Bow Gate on FC accommodates a trolling motor)

Storage Below All Lounge Furniture

Table w/Drink Holders

Ski Tow Bar*

Lowback Helm Chair w/ Folding Armrest, Slider & Swivel*

Jensen® Stereo w/ Bluetooth & Two Speakers*

Woven Flooring*

13-Gallon Livewell (Furniture Drop-In)(CS Only)*

*Optional

FEATURES & OPTIONS

Add comfort, style, function and fun with a full range of features and options available for most pontoons. Visit Crestliner.com or your local dealer for complete information.

RALLY DX & RALLY



WOODGRAIN TABLE WITH DRINK HOLDERS

Standard on Rally DX, Optional on Rally
(Also available in Gray)



10-GALLON AERATED LIVEWELL

Optional on Rally DX & Rally
(Furniture Drop-in)



CHANGING ROOM WITH CURTAIN

Optional on Rally DX & Rally



PRO SEAT

Standard on Rally DX FC & FS models
(Also available in Gray)



DELUXE SEAT

Standard on Rally FC & FS models
(Also available in Beige)



LIGHTING PACKAGE

Optional on Rally DX & Rally
(Rally DX Shown)



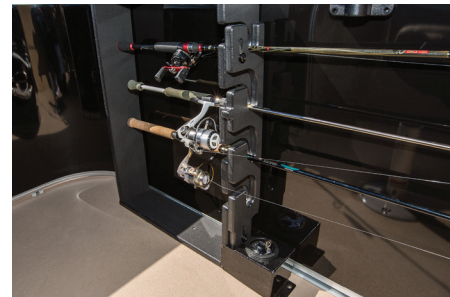
BIMINI TOP

10' Standard on Rally DX & Rally
Optional 12' Lighted & 12' Double Bimini Tops



FULL ENCLOSURE PACKAGE

Includes double Bimini top with bow, side & aft curtains. Optional on Rally DX & Rally



LOCKING ROD STORAGE

Standard on Rally DX & Rally FC & FS models

SPRINT



STERN LOUNGE BENCH

Standard on CS & FC models



SKI TOW BAR

Optional on CS & FC models



LOWBACK HELM CHAIR

Optional on CS & FC models

COLOR & FLOORING OPTIONS

RALLY DX & RALLY

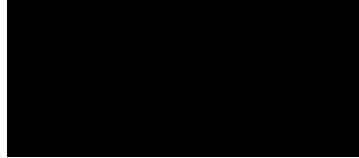
FENCE & ACCENT COLORS



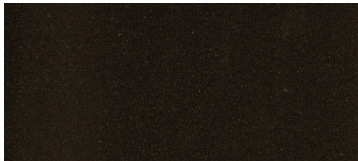
Carbon Steel (Fence & optional accent color)



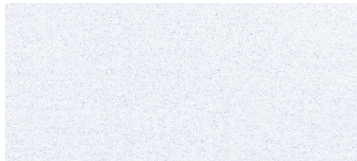
Nautical Blue (Fence & optional accent color)



Onyx Black (Fence only and optional accent color)



Canyon Brown Metallic (Fence only)



White Fusion Metallic (Fence only)



Matte Black (Optional accent color only)

GRAPHICS & RAILS



Sport Graphic (Optional)



Tube Accent Graphic w/Optional Tube Sport Graphic (Rally DX only)

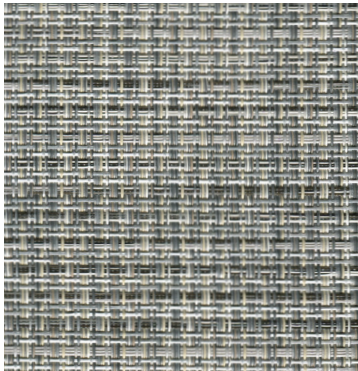


Silver Anodized Rails (Standard)

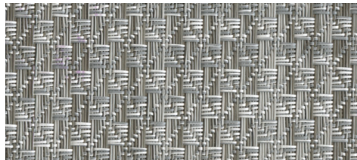


Black Anodized Rails (Optional)

FLOORING



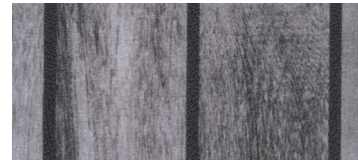
Wide Woven, Neutral (Standard)



Woven Shadow Diamonds, Gray (Optional)



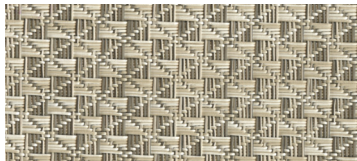
Woven Teak, Warm Gray (Optional)



Vinyl Teak, Gray (Optional)



Vinyl, Gray (Optional)



Woven Shadow Diamonds, Beige (Optional)



Woven Teak, Beige (Optional)



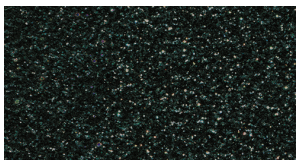
Vinyl Teak, Beige (Optional)



Vinyl, Beige (Optional)

SPRINT

FENCE COLORS



Black Metallic Fence w/ Silver Rails



Maroon Red Fence w/ Silver Rails

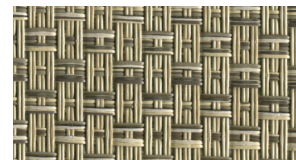


Slate Blue Fence w/ Silver Rails

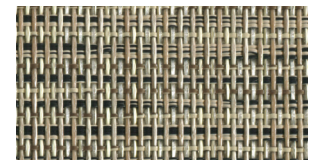
FLOORING



Vinyl, Beige (Standard)



Wide Woven (Optional)



Narrow Woven (Optional)

FLOORPLANS & SPECIFICATIONS

SPECIFICATIONS

Overall Length (Includes ladder)
 Pontoon Length
 Pontoon Diameter (.080 gauge)
 Beam
 Weight
 (2 tubes/3 tubes)
 Max Weight Capacity*
 (2 tubes/3 tubes)
 Max Person Capacity*
 (2 tubes/3 tubes)
 Max HP Capacity (2 tubes/3 tubes)
 Fuel Capacity (2 tubes/3 tubes)
 Draft Up/Draft Down
 Bimini Clearance
 (Bimini and stern lights down)

RALLY DX / RALLY

| | 240 | | 220 | | 200 | |
|--|--------------------------|------------------------------|--------------------------|------------------------------|--------------------------|------------------------------|
| Overall Length (Includes ladder) | 25'9" | 7.85 m | 23'5" | 7.14 m | 22'1" | 6.73 m |
| Pontoon Length | 24' | 7.32 m | 22' | 6.71 m | 20' | 6.10 m |
| Pontoon Diameter (.080 gauge) | 25" | 63.50 cm | 25" | 63.50 cm | 25" | 63.50 cm |
| Beam | 8'6" | 2.59 m | 8'6" | 2.59 m | 8'6" | 2.59 m |
| Weight (2 tubes/3 tubes) | 2,705# (2) 3,400# (3) | 1,227 kg (2) 1,542 kg (3) | 2,495# (2) 3,010# (3) | 1,132 kg (2) 1,365 kg (3) | 2,265# (2) 2,560# (3) | 1,027 kg (2) 1,161 kg (3) |
| Max Weight Capacity* (2 tubes/3 tubes) | 2,314# (2) 2,679# (3) | 1,050 kg (2) 1,215 kg (3) | 2,073# (2) 2,410# (3) | 940 kg (2) 1,093 kg (3) | 1,918# (2) 2,222# (3) | 870 kg (2) 1,007 kg (3) |
| Max Person Capacity* (2 tubes/3 tubes) | 12-13 (2) 14-15 (3) | 12-13 (2) 14-15 (3) | 10-11 (2) 12-13 (3) | 10-11 (2) 12-13 (3) | 9-10 (2) 11 (3) | 9-10 (2) 11 (3) |
| Max HP Capacity (2 tubes/3 tubes) | 150/200 | 150/200 | 150/200 | 150/200 | 115/150 | 115/150 |
| Fuel Capacity (2 tubes/3 tubes) | 28 gal (2) 37 gal (3) | 106 L (2) 140 L (3) | 28 gal (2) 37 gal (3) | 106 L (2) 140 L (3) | 28 gal (2) 37 gal (3) | 106 L (2) 140 L (3) |
| Draft Up/Draft Down | 12"/21" | 31 cm/53 cm | 12"/21" | 31 cm/53 cm | 12"/21" | 31 cm/53 cm |
| Bimini Clearance (Bimini and stern lights down) | 62" | 158 cm | 62" | 158 cm | 62" | 158 cm |

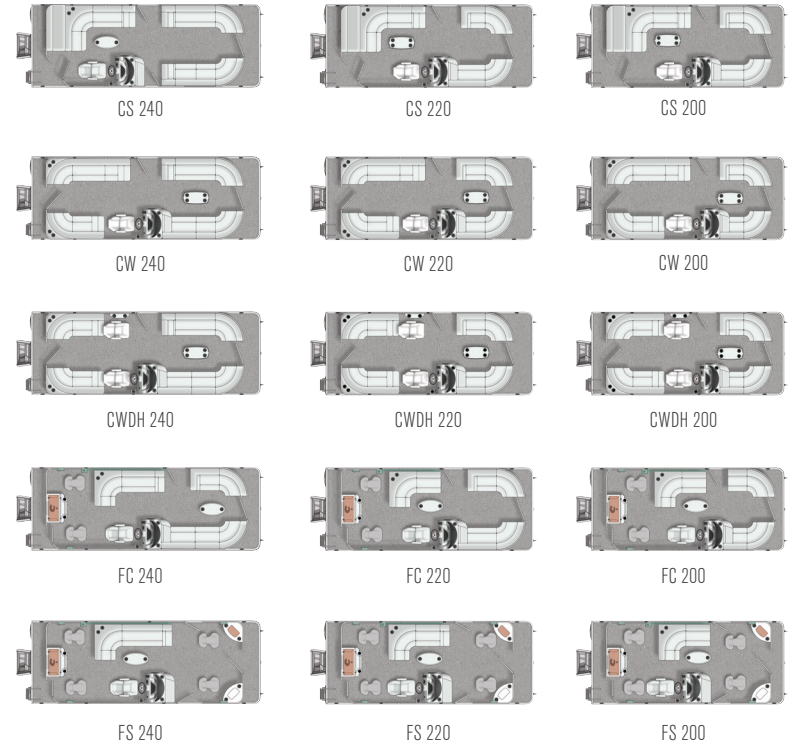
* Note: Max capacity = person + motor. Engine size affects capacity. Tube diameter also changes capacity.

SPRINT

| | 200 | | 180 | | 160 | |
|----------------------------------|---------------------------------|---------------------------------|---------------------------------|---------------------------------|---------------------------------|---------------------------------|
| Overall Length (Includes ladder) | 21' 4" | 6.50 m | 19' 6" | 5.94 m | 17' 10" | 5.44 m |
| Pontoon Length | 20' 3" | 6.17 m | 18' 3" | 5.56 m | 16' 3" | 4.95 m |
| Pontoon Diameter (.080 gauge) | 25" | 63.50 cm | 25" | 63.50 cm | 25" | 63.50 cm |
| Beam | 8' | 2.44 m | 8' | 2.44 m | 8' | 2.44 m |
| Weight | 1,780# CS 1,792# FC | 807 kg CS 813 kg FC | 1,672# CS 1,672# FC | 758 kg CS 758 kg FC | 1,605# CS 1,629# FC | 728 kg CS 740 kg FC |
| Max Weight Capacity* | 2,219# CS 2,214# FC | 1,007 kg CS 1,004 kg FC | 1,939# CS 1,939# FC | 880 kg CS 880 kg FC | 1,659# CS 1,640# FC | 753 kg CS 744 kg FC |
| Max Person Capacity* | 11 | 11 | 9 | 9 | 8 | 8 |
| Max HP Capacity | 115 | 115 | 75 | 75 | 50 | 50 |
| Fuel Capacity | 6 gal Portable 23 L Portable | 6 gal Portable 23 L Portable | 6 gal Portable 23 L Portable | 6 gal Portable 23 L Portable | 6 gal Portable 23 L Portable | 6 gal Portable 23 L Portable |

*Note: Max capacity = person + motor. Engine size affects capacity.

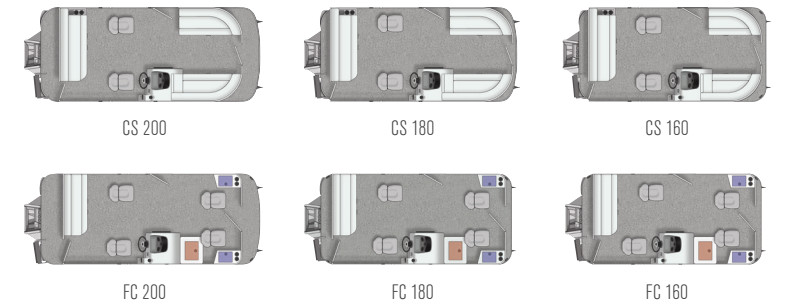
RALLY DX / RALLY



All Models: Storage below all lounge furniture

FC & FS: Rod Storage **Livewell**

SPRINT



All Models: Storage below Stern Bench
 Storage below all lounge furniture (CS)

FC: Storage **Livewell**

| FLOORPLAN | RALLY DX | | | | | RALLY | | | | | SPRINT | |
|---|-----------------|-----------------|-----------------|-----------------|-----------------|-----------------|-----------------|-----------------|-----------------|-----------------|-----------------|-------------|
| | CS | CW | CWDH | FC | FS | CS | CW | CWDH | FC | FS | CS | FC |
| SEATING | | | | | | | | | | | | |
| Helm Seat with Slider & Swivel (Lowback, Non-Reclining / Highback Recliner) | - / STD | - / STD | - / STD | - / STD | - / STD | STD / OPT | STD / OPT | STD / OPT | STD / OPT | STD / OPT | - / OPT | - / OPT |
| Deluxe / Pro Fishing Seats | -/- | -/- | -/- | - / STD (2) | - / STD (4) | -/- | -/- | -/- | STD (2) / - | STD (4) / - | STD (2) / - | STD (4) / - |
| Chaise Lounge Chairs / Pillow Top Chaise Lounge Chairs | - / STD | - / STD | - / STD | - / STD | - / STD | STD / - | STD / - | STD / - | STD / - | STD / - | STD / - | STD / - |
| Lounge Bench / Bench w/ Conversion Backrest | -/- | -/- | -/- | -/- | -/- | -/- | -/- | -/- | -/- | -/- | STD / OPT | STD / OPT |
| Adjustable Height Seat Base | OPT | OPT | OPT | OPT | OPT | OPT | OPT | OPT | OPT | OPT | - | - |
| HELM | | | | | | | | | | | | |
| Raised Helm | OPT | OPT | OPT | OPT | OPT | - | - | - | - | - | - | - |
| Gauges, Analog (Tachometer & Trim / Fuel) | STD / STD | STD / STD | STD / STD | STD / STD | STD / STD | STD / STD | STD / STD | STD / STD | STD / STD | STD / STD | STD / STD | STD / STD |
| Speedometer, (Rally DX: GPS Driven) | STD | STD | STD | STD | STD | OPT | OPT | OPT | OPT | OPT | STD | STD |
| Depth sounder, Digital | OPT | OPT | OPT | OPT | OPT | OPT | OPT | OPT | OPT | OPT | - | - |
| Premium Steering Wheel | STD | STD | STD | STD | STD | OPT | OPT | OPT | OPT | OPT | - | - |
| Windscreen (Removable) | STD | STD | STD | STD | STD | STD | STD | STD | STD | STD | STD | STD |
| MB Quart® Stereo w/ 2 Speakers / w/ 4 Speakers & Deck Remote | - / - | - / - | - / - | - / - | - / - | STD / OPT | STD / OPT | STD / OPT | STD / OPT | STD / OPT | OPT / - | OPT / - |
| MB Quart® Stereo w/ 4 Speakers / w/ 6 Speakers, Deck Remote, Sub Woofer & Amplifier | STD / OPT | STD / OPT | STD / OPT | STD / OPT | STD / OPT | - / - | - / - | - / - | - / - | - / - | - / - | - / - |
| STEERING | | | | | | | | | | | | |
| Hydraulic Steering / Xtreme Steering / Panther Power Steering | OPT / OPT / OPT | OPT / OPT / OPT | OPT / OPT / OPT | OPT / OPT / OPT | OPT / OPT / OPT | OPT / OPT / OPT | OPT / OPT / OPT | OPT / OPT / OPT | OPT / OPT / OPT | OPT / OPT / OPT | OPT / OPT / OPT | - / - / - |
| Mercury Active Trim | OPT | OPT | OPT | OPT | OPT | OPT | OPT | OPT | OPT | OPT | - | - |
| Tilt Steering (Included w/ Hydraulic & Xtreme Steering on Rally DX & Rally) | STD | STD | STD | STD | STD | OPT | OPT | OPT | OPT | OPT | OPT | OPT |
| FISHING FEATURES | | | | | | | | | | | | |
| Fishing Station* | - | - | - | STD | STD | - | - | - | STD | STD | - | - |
| Bow Angling Stations w/ 15 Gallon Livewell & Tackle Storage | - | - | - | - | STD | - | - | - | - | STD | - | - |
| Livewell, 15 Gallon (In Front of Helm) | - | - | - | - | - | - | - | - | - | - | - | STD |
| Livewell, Furniture Drop-in | OPT | OPT | OPT | OPT | OPT | OPT | OPT | OPT | OPT | OPT | OPT | - |
| Locking Rod Storage (4 Tubes @ 8' Capacity) | - | - | - | STD | STD | - | - | - | STD | STD | - | - |
| Rod Holders (Rail Mount) | - | - | - | STD (2) | STD (4) | - | - | - | STD (2) | STD (4) | - | - |
| Lowrance Hook2 4x Fishfinder / Simrad G05 or G07 | - / OPT | - / OPT | - / OPT | - / OPT | - / OPT | OPT / - | OPT / - | OPT / - | OPT / - | OPT / - | OPT / - | OPT / - |
| Half-Gate (Rally DX/Rally Includes Trolling Motor Outlet & Harness, Bow) | OPT | OPT | OPT | OPT | OPT | OPT | OPT | OPT | OPT | OPT | - | STD |
| COLORS & GRAPHICS | | | | | | | | | | | | |
| Accent Fence Color | OPT | OPT | OPT | OPT | OPT | OPT | OPT | OPT | OPT | OPT | - | - |
| Anodized Rails, Rub Rail & Bimini Frame (Silver / Black) | STD / OPT | STD / OPT | STD / OPT | STD / OPT | STD / OPT | STD / OPT | STD / OPT | STD / OPT | STD / OPT | STD / OPT | STD / - | STD / - |
| Sport Graphic / Tube Accent Graphics | OPT / STD | OPT / STD | OPT / STD | OPT / STD | OPT / STD | OPT / - | OPT / - | OPT / - | OPT / - | OPT / - | - / - | - / - |
| ACCESSORIES | | | | | | | | | | | | |
| Changing Room w/ Curtain | OPT | OPT | OPT | OPT | OPT | OPT | OPT | OPT | OPT | OPT | - | - |
| Courtesy Lights / Docking Lights | STD / STD | STD / STD | STD / STD | STD / STD | STD / STD | OPT / OPT | OPT/OPT | OPT/OPT | OPT/OPT | OPT/OPT | STD / OPT | STD / OPT |
| Lighting Package (Rope Lights, Lighted Speakers & Drink Holders) | OPT | OPT | OPT | OPT | - | OPT | OPT | OPT | OPT | - | - | - |
| Ski Tow Bar | OPT | OPT | OPT | OPT | OPT | OPT | OPT | OPT | OPT | OPT | OPT | OPT |
| 4-Step Ladder w/ Platform / 4-Step Stainless Steel Telescoping Ladder | - / STD | - / STD | - / STD | - / STD | - / STD | STD / OPT | STD / OPT | STD / OPT | STD / OPT | STD / OPT | STD / - | STD / - |
| Stainless Steel Cleats / Stainless Steel Flip-up Cleats | - / STD | - / STD | - / STD | - / STD | - / STD | STD / OPT | STD / OPT | STD / OPT | STD / OPT | STD / OPT | - / - | - / - |
| Table w/ 4 Drink Holders / Upgraded Woodgrain Table w/ 2 Drink Holders | - / STD | - / STD | - / STD | - / STD | - / STD | STD / OPT | STD / OPT | STD / OPT | STD / OPT | STD / OPT | STD / - | STD / - |
| CANVAS COVERS | | | | | | | | | | | | |
| Mooring Cover (Snapless for Rally DX & Rally) | STD | STD | STD | STD | STD | STD | STD | STD | STD | STD | OPT | OPT |
| Bimini Top | STD | STD | STD | STD | STD | STD | STD | STD | STD | STD | STD | STD |
| Bimini Top, Double | OPT | OPT | OPT | OPT | OPT | OPT | OPT | OPT | OPT | OPT | - | - |
| Bimini Top 12' / 12' Lighted | OPT / OPT | OPT / OPT | OPT / OPT | OPT / OPT | OPT / OPT | OPT / OPT | OPT / OPT | OPT / OPT | OPT / OPT | OPT / OPT | - / - | - / - |
| Full Enclosure (Double Bimini, Front, Side & Aft Curtains) | OPT | OPT | OPT | OPT | OPT | OPT | OPT | OPT | OPT | OPT | - | - |
| PERFORMANCE & CONSTRUCTION | | | | | | | | | | | | |
| 27" Tubes (Includes Full Length Keel) | OPT | OPT | OPT | OPT | OPT | OPT | OPT | OPT | OPT | OPT | - | - |
| Keel (Full Length Extruded) / Lifting Strakes | STD / OPT | STD / OPT | STD / OPT | STD / OPT | STD / OPT | STD / OPT | STD / OPT | STD / OPT | STD / OPT | STD / OPT | STD / OPT | STD / OPT |
| Skin Kit (Aluminum) | OPT | OPT | OPT | OPT | OPT | OPT | OPT | OPT | OPT | OPT | OPT | OPT |
| 3 Tube Packages (V3 Action Package / V3 Ski Package)** | OPT / OPT | OPT / OPT | OPT / OPT | OPT / OPT | OPT / OPT | OPT / OPT | OPT / OPT | OPT / OPT | OPT / OPT | OPT / OPT | - / - | - / - |
| Rough Water Package / Saltwater Package | OPT / OPT | OPT / OPT | OPT / OPT | OPT / OPT | OPT / OPT | OPT / OPT | OPT / OPT | OPT / OPT | OPT / OPT | OPT / OPT | - / OPT | - / OPT |

FLOORPLANS: CS=Cruise, CW=Center Walk-Through, CWDH=Center Walk-Through Dual Helm, FC = Fish & Cruise, FS = Fish
 *Fishing Station includes 15 gallon livewell w/ light & pump, washdown system, throw tray, tool holders & drink holders

LEGEND: STD = Standard OPT = Optional - = Not Available
 **See page 3 for more information on 3 Tube Packages

These are just some of the features and options available. Please see the Crestliner website for more information. Some features/options may change based on layout. Every effort was made to ensure that this information was accurate at the time of printing. Crestliner assumes no responsibility for errors in type or in print.



CRESTLINER

FORGED WITH STRENGTH. DEFINED BY DURABILITY.

*Not all processes, features and statements apply to every Crestliner pontoon model.

All prices and specifications subject to change. Crestliner reserves the right to discontinue models or change prices, specifications, materials, equipment, color or design at any time without notice and without incurring obligations. Some models are shown with optional features and equipment. Outboard model weights shown in this catalog reflect the approximate weight of the pontoon only, and do not include weights of the outboard motor or accessories installed. All pontoons meet or exceed United States Coast Guard regulations, applicable American Boat and Yacht Council standards and are certified by the National Marine Manufacturer's Association. Receive a limited lifetime warranty on pontoon tubes, crossmembers, decking, motor mount and fence rails. Plus, a 5-year bow-to-stern warranty on virtually everything else. It only gets better from there. Crestliner's warranty transfers to future owners. When its time to upgrade to a new Crestliner, you have the option to transfer the warranty to the second owner. Our proven welding techniques and innovations allow us to offer you one of the best warranties in the industry. Some restrictions apply. For complete details, a copy of our limited warranty is attached to each new pontoon or may be obtained from your Crestliner dealer. Many pontoons featured in this catalog are shown with available options. See your dealer for details. Every effort was made to ensure that this information was accurate at the time of printing. Crestliner assumes no responsibility for errors in type, in print or in photos. Please follow the rules of safe boating, be courteous to others and respect the marine environment. Special thanks to MMA®, Mercury Marine®, Onyx® and Fair Hills Resort, Detroit Lakes, MN & Port of Kimberling Marina & Resort, Kimberling City, MO.

©2020 Crestliner / A Brunswick boat company. Printed in USA