

CRESTLINER

1989 ALUMINUM



Crestliner fishing boats are true thoroughbred fishing machines. Lockable electronics boxes perfectly located. Rod lockers and storage compartments exactly right. Large tournament livewells. Comfortable. Rugged. But the biggest advantage of a Crestliner fishing boat is the deep V rivet free hull. Born from a runabout hull, it's no wonder the ride and performance is far superior to any of its competitors. A soft ride in rough water, these boats simply will not pound like other aluminum fishing boats. Exceptional stability when casting. Steady tracking while backtrolling. If you take your fishing seriously, it's time you move up to a Crestliner fishing machine.

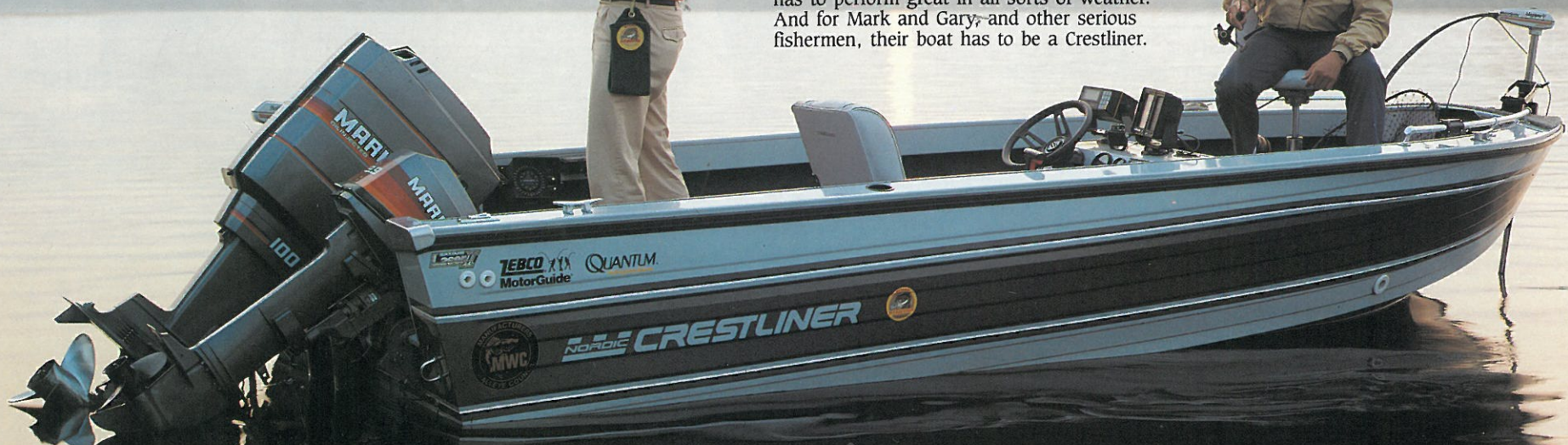
"I can't say enough about the performance of my 17' Viking. And it's great to be in the best looking fishing boat on the water today."

MARK DORN

Top tournament fishermen like Mark Dorn and Gary Grable fish for a living. Their boat has to be comfortable, functional and rugged to withstand the rigors of fishing day after day. It has to perform great in all sorts of weather. And for Mark and Gary, and other serious fishermen, their boat has to be a Crestliner.

"Simply the most steady backtrolling rig I've been in and it won't pound waves like other aluminum boats."

GARY GRABLE



V170 Viking Deluxe

Quality. Innovations. And Style.



SST

Space Saver Transom. An incredible innovation that increases cockpit space and provides all the advantages of stern bracket type mounts at less cost and without that "add-on" look. The SST is an integral part of the welded hull construction. Another innovation you will find only from Crestliner.

STERN CONVERSION

1. The folded down position provides more cockpit space and a bench to be used when still fishing or slow trolling. (The bench is not to be used at high speeds.)



2. An easy lift of the strap quickly forms a full length stern bench seat complete with backrest. This bench seat conversion provides comfortable stern seating.



3. By simply pivoting the backrest forward, a sturdy fishing platform is formed. Add pedestal and swivel seat and you've completed the fishing conversion.



The stern conversion can also be added as a 2 position (position 2 & 3) conversion with storage or a livewell under the seat.

CRESTLINER

Seat hinges are free from dangerous pinch points.

3/4" thick flooring for a solidness you can feel.

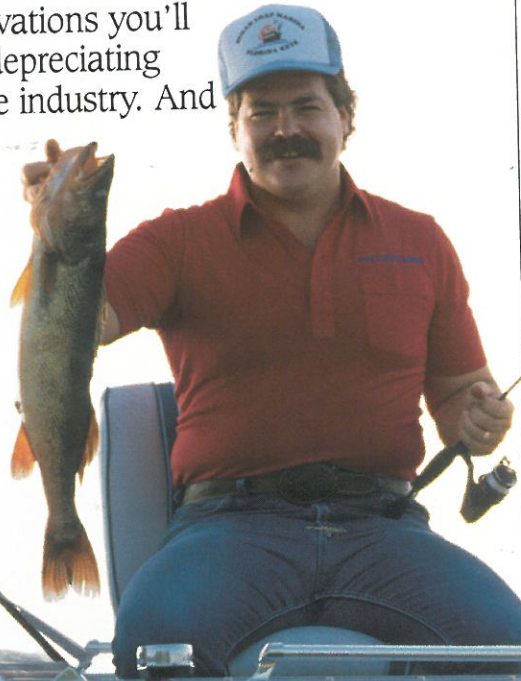
Rivet free hull bottoms with welded aluminum support beams and stringers.

Underfloor gas tank.

Aluminum boats have never looked this good. Welded rivet free construction provides the beauty and strength that gives Crestliner boats a style all their own. Stern and bow conversions and the Space Saver Transom (SST) are innovations you'll find only from Crestliner. Our incredible 10/20 year non-depreciating

transferable warranty leads the industry. And our acrylic paint finishes are meticulously applied and baked in ovens to insure long lasting beauty. A beauty that carries a 2 year warranty. Try and

find another boat company that offers you this. Quality. Innovations. And style. No one does it better than Crestliner.



BOW CONVERSION

The patented fish/ski conversion bow continues to make Crestliner the best dual purpose runabout available. The bow easily converts from a fishing platform to bow seating in just seconds. No loose parts need to be stored in this totally integrated unit. The bow conversion is available in most open bow models in both fiberglass and aluminum.



Underfloor metal backup plates are used on all seat bases.



Crestliner Sabre Sportfishes are big aluminum fishing boats designed specifically for big water fishing. "Peace of mind" welded construction carries a full 20/10 year transferable warranty.

Rivet free V hulls soften waves and add stability in rough water. Roomy cabins allow a comfortable escape from the elements. Wide beams. Spacious deep cockpits. Plenty of room to fight anything in the water.

Downrigger access? You bet. Up close the way it should be. If you like outboards and demand maximum cockpit area you've got to see the SST. The Space Saver Transom allows for full stern access. An innovation you'll find only at Crestliner. We're very serious about building the big boats for big water fishermen.



V275 Sabre Sportfish



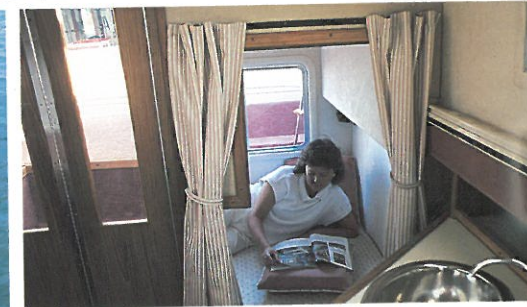
V275 Sabre Midberth D.C.

SABRE DAY CRUISER

- V275 Sabre Midberth Day Cruiser
- V245 Sabre Midberth Day Cruiser
- V245 Sabre Day Cruiser
- V225 Sabre Day Cruiser



V275 Sabre Midberth D.C.





V245 Sabre Midberth D.C.



V225 Sabre D.C.

Spacious cabins, well appointed interiors, midberth sleeper compartments, deep cockpits and 8' and 9½' beams. Experience the style, performance and comfort of a Sabre Day Cruiser.

	LENGTH	MAX BEAM	TRANSOM BEAM	COCKPIT DEPTH	WEIGHT	WEIGHT CAP.	FUEL CAP.	BOTTOM GAUGE	MAX H.P.
V275	26' 8" (8.1m)	116" (295cm)	116" (295cm)	39" (99cm)	4990# (2262kg)	2000# (908kg)	98 gal. (371L)	.125	280 Single 175 Twin
V245	24' 4" (7.4m)	102" (259cm)	102" (259cm)	35" (89cm)	3950# (1792kg)	2000# (908kg)	52 gal. (197L)	.100	260
V245	24' 4" (7.4m)	102" (259cm)	102" (259cm)	35" (89cm)	3650# (1656kg)	2000# (908kg)	52 gal. (197L)	.100	260
V225	22' 4" (6.8m)	102" (259cm)	102" (259)	35" (89cm)	3350# (1520kg)	1750# (795kg)	41 gal. (155L)	.100	230



V220 Sabre GL Sportfish SST

V245 Sabre GL Sportfish (w/hardtop)

SABRE GL SPORTFISH

- V275 Sabre Sportfish
- V245/240 Sabre GL Sportfish
- V225/220 Sabre GL Sportfish
- V205/200 Sabre GL Sportfish
- V195/190 Sabre GL Sportfish

	LENGTH	MAX BEAM	TRANSOM BEAM	COCKPIT DEPTH	WEIGHT	WEIGHT CAP.	FUEL CAP.	BOTTOM GAUGE	MAX H.P.
V275 S.F.	26'8" (8.1m)	116" (295cm)	116" (295cm)	39" (99cm)	4850# (2202kg)	2000# (908kg)	98 gal. (371L)	.125	280 single 175 twin
V245 G.L.	24'4" (7.4m)	102" (259cm)	102" (259cm)	35" (89cm)	3500# (1588kg)	2000# (908kg)	52 gal. (197L)	.100	260
V240 G.L.	24'4" (7.4m)	102" (259cm)	102" (259cm)	35" (89cm)	2350# (1066kg)	2000# (908kg)	52 gal. (197L)	.100	230
V225 G.L.	22'4" (6.8m)	102" (259cm)	102" (259cm)	35" (89cm)	3250# (1474kg)	1750# (795kg)	41 gal. (155L)	.100	230
V220 G.L.	22'4" (6.8m)	102" (259cm)	102" (259cm)	35" (89cm)	2100# (953kg)	2000# (908kg)	41 gal. (155L)	.100	230
V205 G.L.	20'4" (6.2m)	96" (244cm)	96" (244cm)	30" (76cm)	2970# (1348kg)	1750# (795kg)	34 gal. (129L)	.100	230
V200 G.L.	20'4" (6.2m)	96" (244cm)	96" (244cm)	30" (76cm)	1820# (826kg)	2000# (908kg)	34 gal. (129L)	.100	205
V195 G.L.	19' (5.8m)	96" (244cm)	96" (244cm)	30" (76cm)	2800# (1271kg)	1750# (795kg)	34 gal. (129L)	.100	205
V190 G.L.	19' (5.8m)	96" (244cm)	96" (244cm)	30" (76cm)	1650# (749kg)	1750# (795kg)	34 gal. (129L)	.100	185



V275 Sportfish

V225 Sabre Closed Bow



V190 Sabre Sportfish SST



V200 Sabre SST

	LENGTH	MAX BEAM	TRANSOM BEAM	COCKPIT DEPTH	WEIGHT	WEIGHT CAP.	FUEL CAP.	BOTTOM GAUGE	MAX H.P.
V245	24'4" (7.4m)	102" (259cm)	102" (259cm)	35" (89cm)	3300# (1497kg)	2000# (908kg)	52 gal. (197L)	.100	260
V240	24'4" (7.4m)	102" (259cm)	102" (259cm)	35" (89cm)	2150# (975kg)	2000# (908kg)	52 gal. (197L)	.100	230
V225	22'4" (6.8m)	102" (259cm)	102" (259cm)	35" (89cm)	3050# (1383kg)	1750# (795kg)	41 gal. (155L)	.100	230
V220	22'4" (6.8m)	102" (259cm)	102" (259cm)	35" (89cm)	3050# (862kg)	1750# (908kg)	41 gal. (155L)	.100	230
V205	20'4" (6.2m)	96" (244cm)	96" (244cm)	30" (76cm)	2770# (1258kg)	1750# (795kg)	34 gal. (129L)	.100	230
V200	20'4" (6.2m)	96" (244cm)	96" (244cm)	30" (76cm)	1620# (735kg)	2000# (908kg)	34 gal. (129L)	.100	205
V195	19' (5.8m)	96" (244cm)	96" (244cm)	30" (76cm)	2600# (1180kg)	1750# (795kg)	34 gal. (129L)	.100	205
V190	19' (5.8m)	96" (244cm)	96" (244cm)	30" (76cm)	1450# (658kg)	1750# (795kg)	34 gal. (129L)	.100	185

SABRE RUNABOUTS

V245/240 Closed Bow
 V225/220 Closed & Open Bow
 V205/200 Closed & Open Bow
 V195/190 Closed, Open Bow & SF



V215 Vanguard Cuddy

VANGUARD

- V245 Vanguard Cuddy
- V215 Vanguard Cuddy
- V215 Vanguard Open Bow
- V195 Vanguard Open Bow
- V185 Vanguard Open Bow



	LENGTH	MAX BEAM	TRANSOM BEAM	COCKPIT DEPTH	WEIGHT	WEIGHT CAP.	FUEL CAP.	BOTTOM GAUGE	MAX H.P.
V245C*	24'5" (7.4m)	102" (259cm)	102" (259cm)	37" (94cm)	3400# (1542kg)	2000# (908kg)	52 gal. (197L)	.100	260
V215C	21'5" (6.5m)	96" (244cm)	96" (244cm)	34" (86cm)	3070# (1393kg)	1750# (795kg)	34 gal. (129L)	.100	230
V215*	21'5" (6.5m)	96" (244cm)	96" (244cm)	34" (86cm)	2800# (1270kg)	1750# (795kg)	34 gal. (129L)	.100	230
V195	19'2" (5.8m)	86" (218cm)	86" (218cm)	27" (69cm)	2400# (1089kg)	1625# (738kg)	31 gal. (117L)	.100	205
V185*	18'1" (5.5m)	81" (206cm)	81" (206cm)	27" (69cm)	2100# (953kg)	1100# (499kg)	22 gal. (83L)	.090	175

*Estimated Specifications





V195 Vanguard Open Bow (w/sunlounge)



V195 Vanguard Open Bow

You've seen it! Now believe it! The pinnacle of aluminum boat styling. Crestliner's proud new Vanguards have set the trend in aluminum design. Vanguard's elegant lines boldly silhouette the power and strength of its deep V rivet free hull. Appointed for pleasure and comfort, Vanguard features and options include an integrated swim platform, ski and ice cooler storage compartments, and a sunlounge with wrap-around seating. The Vanguard Cuddy adds a look of distinction to the cabin boat class. If you appreciate innovation, technology, and progressive styling you'll love leading the way in a Vanguard.



V180 Phantom SST

PHANTOM

V185/180

V185/180 Phantom Open Bow
V185/180 Phantom Sportfish





V180 Phantom Sportfish



V185 Phantom

The 18' Phantom is a deep, wide design on a rivet free, deep V hull that's built for versatility. The choice is yours. A great family runabout. A roomy sportfish. Or get the best of both worlds with the innovative fish/ski conversion packages. The SST transom gives you one of the biggest cockpits of any 18' boat and stern top storage not available on most other O/B models.

	LENGTH	MAX BEAM	TRANSOM BEAM	COCKPIT DEPTH	WEIGHT	WEIGHT CAP.	FUEL CAP.	BOTTOM GAUGE	MAX H.P.
V185	18'2" (5.5m)	87" (221cm)	87" (221cm)	28" (71cm)	2080# (944kg)	1625# (738kg)	31 gal. (117L)	.100	205
V180	18'2" (5.5m)	87" (221cm)	87" (221cm)	28" (71cm)	1250# (568kg)	1625# (738kg)	31 gal. (117L)	.100	150



V175 Phantom

PHANTOM

V175/170

V175/170 Phantom Open Bow
V175/170 Phantom Sportfish



V170 Phantom



V170 Phantom Sportfish



Sleek and smooth. The Phantom 17's. The best looking 17' aluminum boat on the water. And the best performing. Whether your sport is skiing, fishing or just running around, the Phantom 17's have all the right moves. Superb handling. Fast out-of-the-hole and on plane. Performance you have to feel. O/B or I/O power. Interior options and fish/ski conversions allow you to fit a Phantom to your lifestyle.

	LENGTH	MAX BEAM	TRANSOM BEAM	COCKPIT DEPTH	WEIGHT	WEIGHT CAP.	FUEL CAP.	BOTTOM GAUGE	MAX H.P.
V175	17'6" (5.3m)	83" (211cm)	83" (211cm)	27" (69cm)	1960# (890kg)	1100# (499kg)	22 gal. (83L)	.090	175
V170	17'6" (5.3m)	83" (211cm)	83" (211cm)	27" (69cm)	1075# (488kg)	1425# (647kg)	22 gal. (83L)	.090	125



V160 Mirage

V165 Mirage

MIRAGE

- V165/160 Mirage Open Bow
- V165/160 Mirage Sportfish
- V150 Mirage Open Bow
- V150 Mirage Sportfish



V160 Mirage SST



V150 Mirage

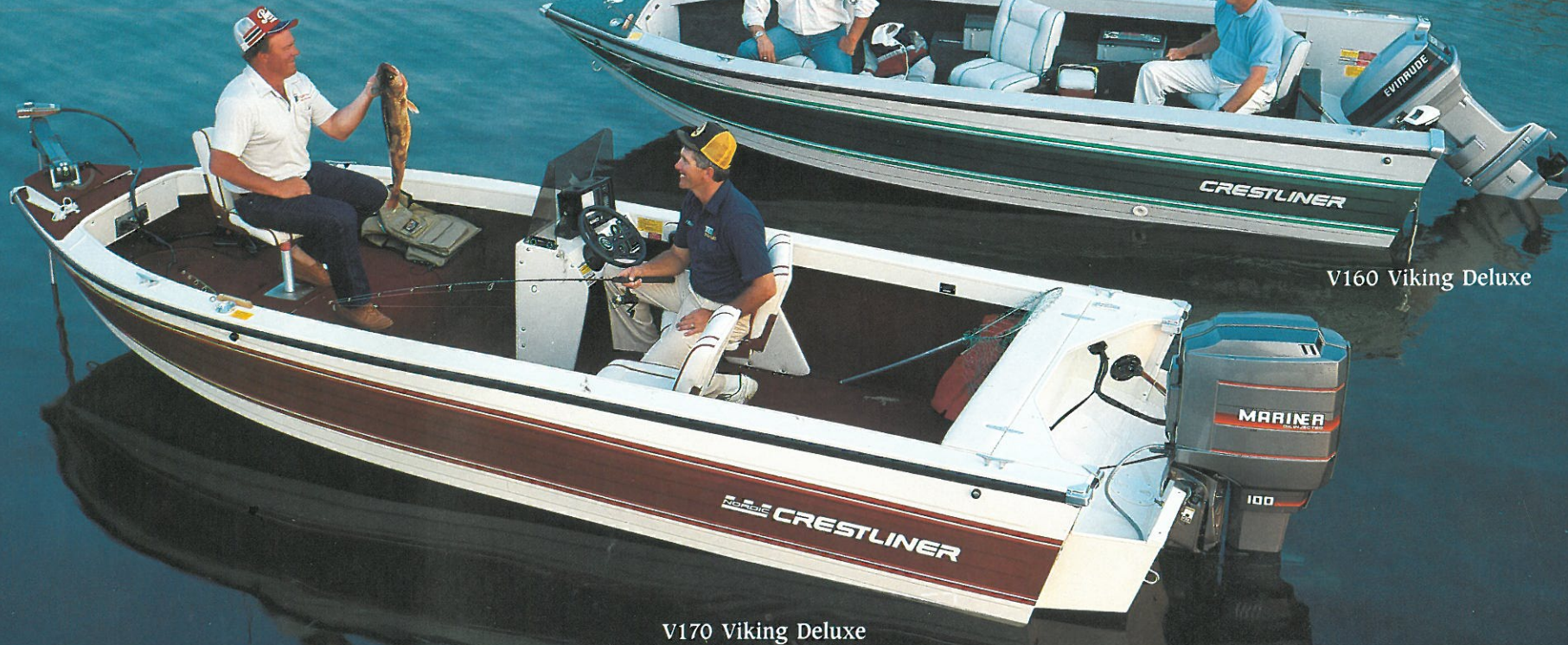
V160 Mirage Sportfish



V165 Mirage

Quick to plane and fun to ride—the 15' and 16' Mirages. Ski, tube or kneeboard, a Mirage will entertain the whole family. These sporty boats are easily trailered by smaller vehicles. The perfect entry level family powerboat. Choose from fish/ski conversions, sportfish models, and I/O power in the V165. Custom fit a Mirage to match your needs and let the fun begin.

	LENGTH	MAX BEAM	TRANSOM BEAM	COCKPIT DEPTH	WEIGHT	WEIGHT CAP.	FUEL CAP.	BOTTOM GAUGE	MAX H.P.
V165	16'5" (5.0m)	78" (198cm)	76" (193cm)	26" (66cm)	1860# (844kg)	1205# (547kg)	22 gal. (83L)	.090	130
V160	16'5" (5.0m)	78" (198cm)	76" (193cm)	26" (66cm)	1020# (463kg)	1300# (590kg)	22 gal. (83L)	.090	100
V150	15' (4.6m)	78" (198cm)	76" (193cm)	24" (61cm)	800# (363kg)	1100# (499kg)	22 gal/opt (83L)	.080	80



V160 Viking Deluxe

V170 Viking Deluxe

VIKING DELUXE FISHING

- V180 Viking Deluxe
- V170 Viking Deluxe
- V160 Viking Deluxe
- V150 Viking Deluxe

If you're as serious about fishing as we are about building the ultimate fishing machine, it's time you moved up to a Crestliner Viking Deluxe. From a "walleye chop" to "whitecaps" you'll fish in the comfort of the best riding, most well equipped aluminum fishing boat on the market. If serious is what you are, then a Viking Deluxe is the boat for you.

	LENGTH	MAX BEAM	TRANSOM BEAM	COCKPIT DEPTH	WEIGHT	WEIGHT CAP.	FUEL CAP.	BOTTOM GAUGE	MAX H.P.
V180	18'2" (5.5m)	87" (221cm)	87" (221cm)	28" (71cm)	1100# (4992kg)	1625# (738kg)	31 gal. (117L)	.100	65 tiller 140 constl.
V170	17'6" (5.3m)	83" (211cm)	83" (211cm)	27" (69cm)	810# (368kg)	1150# (522kg)	22 gal. (83L)	.090	60 tiller 110 constl.
V160	16'5" (5.0m)	78" (198cm)	76" (193cm)	26" (66cm)	710# (322kg)	1150# (522kg)	22 gal. (83L)	.090	60 tiller 90 constl.
V150	15' (4.6m)	78" (198cm)	76" (193cm)	24" (61cm)	650# (295kg)	1100# (499kg)	22 gal/opt (83L)	.080	50 tiller 75 constl.



V150 Viking Deluxe

V180 Viking Deluxe



V170 Maverick



V180 Maverick



V180 Center Console

Need something special? Then catch the new breed. They don't play by old standards—they make new ones! Rivet free welded construction and a deep V hull that cuts like a knife. No sliding or pounding here—just the pure pleasure of performance.

	LENGTH	MAX BEAM	TRANSOM BEAM	COCKPIT DEPTH	WEIGHT	WEIGHT CAP.	FUEL CAP.	BOTTOM GAUGE	MAX H.P.
V200 CC	20'4" (6.2m)	96" (244cm)	96" (244cm)	30" (76cm)	1520# (690kg)	2000# (908kg)	34 gal. (129L)	.100	205
V190 CC	19' (5.8m)	96" (244cm)	96" (244cm)	30" (76cm)	1350# (613kg)	1750# (795kg)	34 gal. (129L)	.100	185
V180 CC	18'2" (5.5m)	87" (221cm)	87" (221cm)	28" (71cm)	1150# (522kg)	1625# (738kg)	31 gal. (117L)	.100	150
V180 Maverick	17'5" (5.3m)	86" (218cm)	86" (218cm)	20" (51cm)	1225# (556kg)	1290# (586kg)	31 gal. (117L)	.100	150
V170 Maverick	17'3" (5.3m)	81" (206cm)	81" (206cm)	20" (51cm)	1165# (529kg)	1100# (499kg)	22 gal. (83L)	.090	125

SPECIALTY FISHING BOATS

V200/V190/V180 Center Console
V170/V180 Maverick



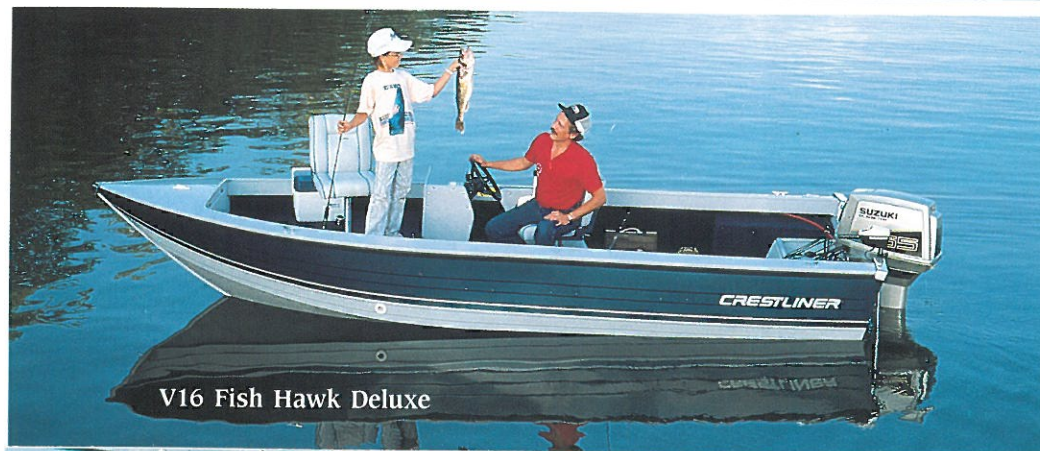
V14 Fish Hawk



V16 Fish Hawk

V-HULL FISHING BOATS

- V16 Fish Hawk Deluxe
- V14 Fish Hawk Deluxe
- V16 Fish Hawk V14 Fish Hawk
- V16 Commander
- V14 Commodore



V16 Fish Hawk Deluxe





V14 Commodore

V16 Commander (Tiller)

V16 Commander (Console)



	LENGTH	MAX BEAM	TRANSOM BEAM	COCKPIT DEPTH	WEIGHT	WEIGHT CAP.	BOTTOM CAP.	MAX H.P.
V14 Commodore	14'5"	69"	69"	22"	570#	925#	.080	40
V14 Fish Hawk	14'5"	69"	69"	22"	570#	925#	.080	40
V16 Commander	16'8"	75"	75"	22"	640#	1150#	.080	55 tiller 60 console
V16 Fish Hawk	16'8"	75"	75"	22"	640#	1150#	.080	55 tiller 70 console
V14 Fish Hawk Dlx.	14'5"	69"	69"	22"	620#	925#	.080	40
V16 Fish Hawk Dlx.	16'8"	75"	75"	22"	690#	1150#	.080	60 tiller 80 console

If you're looking for a lower priced fishing boat but still demand the performance and ride only a deep V can provide, look no further, Crestliner V hull Fish Hawks, Commanders and Commodores are built especially for you! Featuring rivet free hull bottoms and a deep V design all the way to the transom and giving you superior ride, comfort and tracking over any other 14' or 16' aluminum boat in its class. Choose from simple bench seat interiors to pedestal seats and raised platforms, live wells, rod lockers and storage compartments. Rig one to fit your needs and start fishing in the style, quality and performance of a Crestliner. You'll soon find out, nothing else even comes close.



Muskie Pro 16

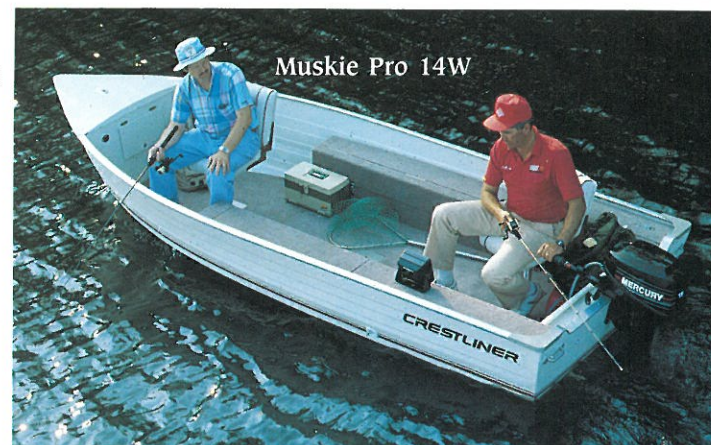
Muskie Pro 16W

MUSKIE PRO FISHING BOATS

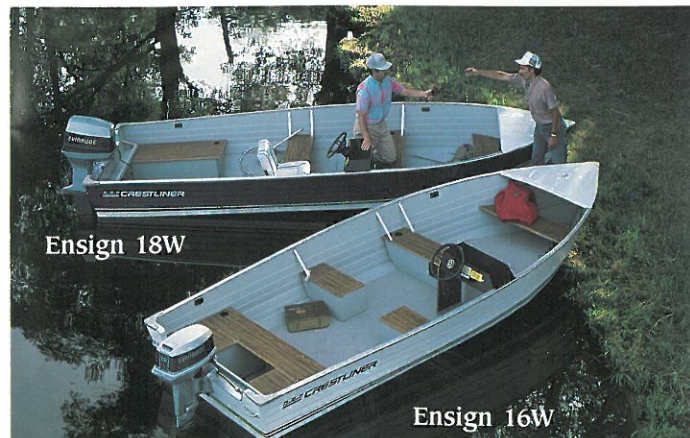
Basic fishing boats and Crestliner quality at entry level pricing. The new Muskie Pro series features flat floors and pedestal seating. Add a raised platform, livewell or console steering. Anyway you rig them, the new Muskie Pros are a great fishing boat for the weekend fisherman.

- Muskie Pro 14W
- Muskie Pro 16
- Muskie Pro 16W
- Muskie Pro 18

	LENGTH	MAX BEAM	TRANSOM BEAM	COCKPIT DEPTH	WEIGHT	WEIGHT CAP.	TRANSOM	BOTTOM GAUGE	MAX H.P.
MP14W	14'1" (4.3m)	68" (174cm)	66" (168cm)	21" (53cm)	420# (191kg)	925# (420kg)	20"	.064	25
MP16	16'3" (5.0m)	68" (174cm)	66" (168cm)	21" (53cm)	490# (222kg)	1250# (567kg)	20"	.072	40
MP16W	16'3" (5.0m)	77" (197cm)	68" (174cm)	23" (58cm)	600# (272kg)	1260# (571kg)	20"	.080	50
MP18W	18' (5.5m)	77" (197cm)	68" (173cm)	23" (58cm)	700# (318kg)	1260# (571kg)	20"	.080	60



Muskie Pro 14W



	LENGTH	MAX. BEAM	TRANSOM BEAM	COCKPIT DEPTH	WEIGHT	WEIGHT CAP.	MAX. H.P.	TRANSOM	BOTTOM GAUGE
Ensign 12	12'1" (3.7m)	58" (148cm)	55" (140cm)	23" (59cm)	160# (73kg)	545# (247kg)	10	15"	.058
Ensign 14	14' (4.3m)	58" (148cm)	55" (140cm)	23" (59cm)	200# (91kg)	670# (304kg)	15	15"	.058
Ensign 14W	14'1" (4.3m)	68" (174cm)	66" (168cm)	34" (87cm)	250# (114kg)	670# (304kg) 790# 20" T (359kg)	25	15"/20"	.064
Ensign 16	16'3" (5.0m)	68" (174cm)	66" (168cm)	34" (87cm)	310# (141kg)	900# (409kg) 1000# 20" T (454kg)	40	15"/20"	.072
Ensign 16W	16'3" (5.0m)	77" (197cm)	68" (173cm)	38" (97cm)	330# (150kg)	1000# 20" T (454kg)	45	20"	.080
Ensign 18W	18' (5.5m)	77" (197cm)	68" (173cm)	38" (97cm)	420# (191kg)	1025# (465kg) 1325# 20" T (602kg)	60	20"	.080

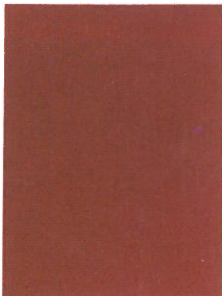
ENSIGN FISHING BOATS

Ensign 12, 14, 14W, 16, 16W, 18W

Options & Specifications

	Aerator, automatic timer	Arm rests, fishing chair	Bases, fishing chair	Bilge pump	Bow bench seat w/ice chest insert	Bow rails	Bow storage	Bucket seats/Captain's chairs	Bunk filler cushions	Carpet, plush	Casting platform	Chart/cigarette lighter	Command instrumentation	Console	Conversion fish/ski bow	Conversion stern, 3 position	Conversion stern, 2 pos. w/storage	Courtesy lights - cockpit	Deck cleat & chocks	Depthfinder, in dash	Docking lights	Dockside power w/charger	Downrigger power outlets (4)	Drinkholders	Electronic compartments, lockable	Fishing chairs	Fishing chairs, deluxe	Floatation, basic	Floatation, level	Foul weather curtain	Fuel tank under floor	Fuel tank, auxiliary under floor	Galley w/sink, stove & ice box	Glove box, lockable	Head, marine	Horn	Livewell w/aerator	Mooring cover	Navigation lights	Pulpit, bow	Refrigerator	Rod holders	Rod storage compartment	Rope grippers	Salt water package	Shower w/hot water system	Ski tow ring	Spotlight, electric remote	Steering, dual cable	Steering hydraulic	Stereo, FM/cassette tape deck	Stern bench, fold down (w/SSD)
V275 Sabre Midberth DC I/O				S	S	S	S-1	S	S		O	S					S	O	O	O	O	O	S			S		S	S	S	S	O				S	O	O	O			O	O	O			O					
V275 Sabre Sportfish	O	O	O	S	S	S	S-2	S	O		O	S					S	O	O	O	O	O	O			O	S		O	S	O	S	O	O			S	O	O	S	S		O	O	O			O				
V245 Sabre Midberth DC I/O				S	S	S	S	S	S		O	S					S	O	O	O	O	O	S			S		S	S	S	S	O				S	O	O	O			O	O	O			O					
V245 & V225 Sabre Day Cruiser I/O				S	S	S	S-2	S	S		O	S					S	O	O	O	O	O	S			S		S	S	S	O				S	O	O	O			O	O	O			O						
V245, V225, V205 & V195 Sabre GL/SF I/O	O	O	O	S	S	S	O	S	O		O	S					S	O	O	O	O	O			S-2	S		O	S	●	O	O	O	O	O	O	S	O	O	S	O		O	O	O			O				
V240, V220, V200 & V190 Sabre GL/SF O/B	O	O	O	S	S	S	O	S	O		O	S					S	O	O	O	O	O			S-2	S		O	S	●	O	O	O	O	O	O	S	O	O	S	O		O	O	O			O				
V245, V225, V205 & V195 Sabre Cl. Bow I/O	O	O	O	S	S	S	O	S	O		O	S					S	O	O	O	O	O	S			O	O	S		●	S	O	O	O	O	S			O	O	O	O			O			O				
V240, V220, V200 & V190 Sabre Cl. Bow O/B	O	O	O	S	S	S	O	S	O		O	O				O	O	S	O	O	O	O	O			O	O	S	^S / _{V190}	O	S	●	S	O	O	O	S			O	O	O			▲	O	O	O			O	
V225, V205, & V195 Sabre Open Bow I/O	O	O	O	S	S	S	O	S	O		O	S					S	O	O	O	O	O	S			O	O	S		●	O	O	O	O	O	S			O	O	O	O			▲	O	O	O			O	
V220, V200 & V190 Sabre Open Bow O/B	O	O	O	S	S	S	O	S	O		O	O				O	O	S	O	O	O	O	O			O	O	S	^S / _{V190}	O	S	●	O	O	O	O	S			O	O	O			▲	O	O	O			O	
V200 & V190 Sabre Center Console O/B	O	S-4	S	O	S	S	O	O	O		O	O	S			O	O	S	O	O	O	O	O	S	S-3	O	S	^S / _{V190}	S		S	O	O	O	S			S	O	O			▲	O	O	O			O			
V245 & V215 Vanguard Cuddy				S	S	S	S-1	S	S		O	S					S	O	O			S			S		S		S		S	O	O	O	S						O	S	O			S						
V215, V195 & V185 Vanguard				S	S	S	O	S	O		O	S					S	O				S			S		S		S		S	O	O	O	S						O	S			S							
V195 Sabre & V185 Phantom SF I/O	O	O	S-5	S	S	S		S	S	O	S					S	O	O	^O / _{V195}	O	S	O	S	O	S-4	S	^O / _{V195}	S		O	O	O	O	S			S	S		O	O			▲	O	O	O			O		
V190 Sabre & V180 Phantom SF O/B	O	O	S-5	S	S	S		S	S	O	O					S	O	O	^O / _{V190}	O	O	O	S	O	S-4	S	^O / _{V190}	S		O	O	O	O	S			S	S		O			▲	O	O	O			O			
V185 & V175 Phantom I/O	O	O	O	S	S	S		S	O	S						S	O	O		O	S	O	O	S		S		S		■	O	O	O	S			O	O	O			O	O	O			O					
V180 & V170 Phantom O/B	O	O	O	S	S	S		S	O	O						S	O	O		O	O	O	O	O	S		S		S		■	O	O	O	S			O	O	O			▲	O	O	O			O			
V180 Phantom Center Console O/B	O	S-4	S	O	S	S		O	O	O		S				O	O	S	O	O	O	O	O	S	S-3	O	S		S		S	O	O	O	S			S	O	O			▲	O	O	O			O			
V180 & V170 Maverick O/B	O	O	S-3	S		S		S	S-2	O		^{S-1} / _{O-2}					S	O			O	S-4		S		S		S		O	S-2	O	S			S	S	O			▲	O	O	O			O					
V175 Phantom & V165 Mirage SF I/O	O	O	S-4	S	S	S		S	S	O	S					S	O	O		O	S	S-3		S		S		S		S	O	O	O	S			S	S		O	O			▲	O	O	O			O		
V170 Phantom & V160 Mirage SF O/B	O	O	S-4	S	S	S		S	S	O	O					S	O	O		O	O	S-3		S		S		S		S	O	O	O	S			S	S		O	O			▲	O	O	O			O		
V165 Mirage I/O	O	O	O	S	S	S		S	O	S						S	O	O		O	S	O		S		S		S		S	O	O	O	S			O	O	O			O	O	O			O					
V160 Mirage O/B	O	O	O	S	S	S		S	O	O						S	O	O		O	O	O		O		S		S		S	O	O	O	S			O	O	O			O	O	O			O					
V150 Mirage O/B	O	O	S-2	S	O	S		S	O							S	O	O		O	S-2			S		S		S		S	O	O	O	S			O	O	O			O	O	O			O					
V150 Mirage SF O/B	O	O	S-3	S	O	S		S	S	O						S	O	O		O	O	S-2		S		S		S		S	O	O	O	S			S	O	O			O	O	O			O					
V180 & V170 Viking Deluxe O/B	O	O	S-2	S	O	S		S	O	O		O				O	O	S	O		O	O	O	S-2	O	S		S		O	O	O	S			O	O	O			S	O	O			O						
V160 & V150 Viking Deluxe O/B	O	O	S-2	S	O	S		S	O	O		O				^O / _{V160}	^O / _{V160}	S	O		O	O	O	S-2	O	S		^S / _{V160}		O	O	O	S			O	O	O			S	O	O			O						

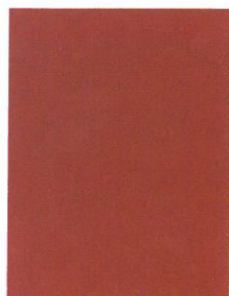
Red



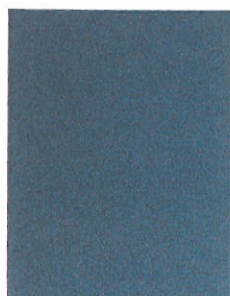
Oyster



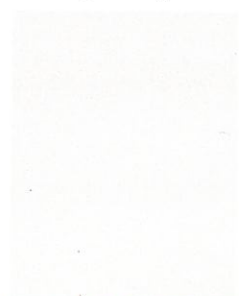
Brown



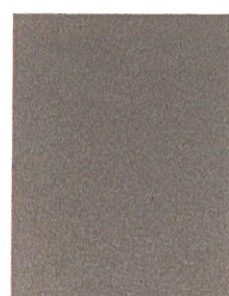
Blue



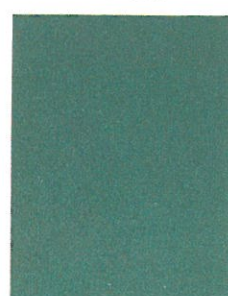
Light Gray



Charcoal



Green



Platinum



Options & Specifications

Stern ladder w/extension (alum.)	Stern ladder w/extension (stainless)	Stern rail	Stern seats	Sunlounge seat	Swim platform, teak, full	Swim platform, teak, half	Top, camper	Top, full	Top, hard	Top, sun	Transom, SST	Trim/trolling motor panel	Trolling motor outlet	Trolling motor mounting plate	Two-position battery switch	Under floor storage	V-berth cabin	Vinyl floor	Wheel, deluxe padded sport	Wheel, deluxe woodgrain	Wheel, ships stainless steel	Windshield, plexiglass molded	Wiper, port	Wiper, starboard	Wraparound stern bench seat		
O	S	S	O	O	O	O	O	S	O						O	S			O	O	O	O	S	O	V275 Sabre Midberth DC I/O		
O	O	S	S		O	O	O	O	O	S					O	S	S		O	O	O	O	O	S	O	V275 Sabre Sportfish	
O	S	S	O	O	O	O	S								O	S			O	O	O	O	S	O	V245 Sabre Midberth DC I/O		
O	S	S	O	O	O	O	S								O	S			O	O	O	O	O	S	O	V245 & V225 Sabre Day Cruiser I/O	
O	O	S	O	O	O	O	S								O	S	S		O	O	O	O	O	S	O	V245, V225, V205 & V195 Sabre GL/SF I/O	
O	O	S			O	O	O	S	O						O	S	S		O	O	O	O	O	S	O	V240, V220, V200 & V190 Sabre GL/SF O/B	
O	S	S	S	O	O	O	S								O	S			O	O	O	O	O	O	O	● V245, V225, V205 & V195 Sabre Cl. Bow I/O	
O	O	S	S		O	O	S	O							O	S			O	O	O	O	O	O	O	★ V240, V220, V200 & V190 Sabre Cl. Bow O/B	
O	S	S	S	O	O	O	S								O	S			O	O	O	O	O	O	O	● V225, V205, & V195 Sabre Open Bow I/O	
O	O	S	S		O	O	S	O							O	S			O	O	O	O	O	O	O	★ V220, V200 & V190 Sabre Open Bow O/B	
O		O					O	O							O			S	O	O	S				O	V200 & V190 Sabre Center Console O/B	
S	S	S	S-1				O	S							O		S		S	O				O	S	O	V245 & V215 Vanguard Cuddy
S	S	S	S				O	S							O			S	O				O	O	O	O	V215, V195 & V185 Vanguard
O	S	S	O	O	O	O	S								O	S			O	O	O	O	O	O	O	O	V195 Sabre & V185 Phantom SF I/O
O	O	S	O				O	S							O	S			O	O	O	O	O	O	O	O	V190 Sabre & V180 Phantom SF O/B
O	S	S	S	O	O	O	S								O	S			O	O	O	O	O	O	O	O	V185 & V175 Phantom I/O
O	O	S	S	O	O	O	S	O							O	S			O	O	O	O	O	O	O	O	V180 & V170 Phantom O/B
O		O					O	O							O			S	O	O	S					O	V180 Phantom Center Console O/B
															O	S	O	O	S				S				V180 & V170 Maverick O/B
O	S	S	O	O	O	O	S								O	S			O	O	O	O	O	O	O	O	V175 Phantom & V165 Mirage SF I/O
O	O	S	O				O	O							O	S			O	O	O	O	O	O	O	O	V170, Phantom & V160 Mirage SF O/B
O	S	S	S	O	O	O	S								O	S			O	O	O	O	O	O	O	O	V165 Mirage I/O
O	O	S	S				O	O							O	S			O	O	O	O	O	O	O	O	V160 Mirage O/B
O	O	S					O	O							O	S			O	O	O	O	O	O	O	O	V150 Mirage O/B
O	O	O					O	O							O	S			O	O	O	O	O	O	O	O	V150 Mirage SF O/B
O															O	S			O	O	O	O	O	O	O	O	V180 & V170 Viking Deluxe O/B
O															O	S			O	O	O	O	O	O	O	O	V160 & V150 Viking Deluxe O/B

Colors

Single Colors: Lt. Gray, Platinum, Oyster
 2-Tone Colors: Red/Lt. Gray, Blue/Lt. Gray, Charcoal/Lt. Gray, Green/Lt. Gray, Red/Plat., Blue/Plat., Charcoal/Plat., Green/Plat., Brown/Oyster, Red/Oyster, Blue/Oyster, Green/Oyster
 3-Tone Colors: (Vanguard models only) Blue/Charcoal/Platinum, Green/Charcoal/Platinum, Red/Charcoal/Platinum

- Standard feature on V170/175, optional under port console on V180/V185.
- ◀ Recommended for 150 horsepower and above.
- ★ Available with SST transom
- Available option on V220/225 & V240/245

Features

Features	V14 Commodore	V16 Commander	V14 Fish Hawk	V16 Fish Hawk	V14 Fish Hawk Deluxe	V16 Fish Hawk Deluxe	Muskie Pro 14 W	Muskie Pro 16	Muskie Pro 16W	Muskie Pro 18W
Aerator, auto timer	O	O	O	O	O	O	O	O	O	O
Bait trays	O	O	O	O	O	O	O	O	O	O
Bench seats - 3	S	S								
Bilge pump	O	O	S	S	S	S	O	O	O	O
Bow bench seat w/livewell			O	O	O	O	O	O	O	O
Bow deck w/storage	O	O	S	S	S	S	S	S	S	S
Carpet, plush	O	O	S	S	S	S	S	S	S	S
Casting platform w/livewell			O	O	O	O	O	O	O	O
Console steering	O	O	O	O	O	O	O	O	O	O
Courtesy lights			O	O	O	O	O	O	O	O
Crest seat	O	O								
Drink holders	S	S								
Electronics compartment			O	O	O	O	O	O	O	O
Fishing chair	O	O	S-2	S-2	S-2	S-2	S-2	S-2	S-2	S-2
Fishing chair armrests	O	O	O	O	O	O	O	O	O	O
Fishing chair base	O	O	O	O	O	O	O	O	O	O
Fishing chair deluxe	O	O	O	O	O	O	O	O	O	O
Fuel/battery compartment	S	S	O	O	O	O	O	O	O	O
Fuel tank, 10 gal. underfloor			O	O	O	O				
Fuel tank, 12 gal (req. plat.)			O	O	O	O				
Glove box	S	S								
Horn	S	S	O	O	O	O	O	O	O	O
Level flotation	S	S	S	S	S	S	S	S	S	S
Livewell, tournament	O	O	O	O	O	O	S	S	S	S
Mooring cover	O	O	O	O	O	O	O	O	O	O
Navigation lights	O	O	S	S	S	S	S	S	S	S
Rope grippers	S	S	S	S	S	S	S	S	S	S
Rod holders			S	S	S	S	S	S	S	S
Rod storage compartment			O	O	O	O	S	S	S	S
Sideline, carpet	O	O	O	O	S	S				
Side storage box	O	O					S	S	S	S
Split seats	O	O								
Stern handles	S	S	S	S	S	S	S	S	S	S
Stern pan	S	S	S	S	S	S	S	S	S	S
Trim/trolling motor panel			O	O	O	O	O	O	O	O
Trolling motor outlet			O	O	O	O	O	O	O	O
Trolling motor mtg. plate			O	O	O	O	O	O	O	O
Vinyl floor	S	S	O	O	O	O	O	O	O	O
Windshield, plexiglass molded	O	O	O	O	O	O	O	O	O	O

Features

Features	Ensign 12	Ensign 14	Ensign 14W	Ensign 16	Ensign 16W	Ensign 18W
Anti-skid floor	S	S	S	S	S	S
Bench seats	S-3	S-3	S-3	S-3	S-3	S-4
Bench seat, add'l					O	O
Bow storage bulkhead					O	O
Console steering					O	O
Crest seat	O	O	O	O	O	O
Deadgrass paint	O	O	O	O	O	O
Drink holder cups - 3	O	O	O	O	O	O
Fishing chair (with flat floor)	O	O	O	O	O	O
Flat floor			O	O	O	O
Glove box	O	O	O	O	O	O
Level flotation	S	S	S	S	S	S
Livewell, side (with flat floor)			O	O	O	O
Mooring cover		O	O	O	O	O
Nav. lights	O	O	O	O	O	O
Rope grippers	O	O	O	O	O	O
Side storage box (with flat floor)			O	O	O	O
Split seat (with flat floor)			O	O	O	O
Stern handles	S	S	S	S	S	S
Stern pan			O	O	O	O
2-Tone paint	O	O	O	O	O	O

10 Questions to ask on boat quality.

CRESTLINER

OTHER

10/20 YR. _____
FULL TERM _____

YES _____

YES _____

YES _____

3/4'' _____

YES _____

YES _____

YES _____

YES _____

1. What is the length of the boat warranty?
2. Is it a **full term** or a **depreciating** (declining coverage) warranty?
3. Is the warranty **transferable**?
4. Is there a paint warranty?
5. Are aluminum hull bottoms free from rivets?
6. Are floors 3/4'' or 1/2'' thick?
7. Do seat bases have under-floor backup plates?
8. Are seat hinges safe from dangerous pinch points?
9. Is there a variety of paint colors to choose from?
10. Is there a variety of interior layouts and options?

All prices and specifications subject to change. Crestliner, Inc. reserves the right to discontinue models or change prices, specifications, materials, equipment, color or design at any time without notice and without incurring obligations. Some models are shown with optional features. All boats meet specifications and standards established by the U.S. Coast Guard. Crestliner, Inc. is an active member of the National Marine Manufacturers Association and Boating Industry Association.

Fiberglass Boats for 1989 New Models. New Designs.

See your Crestliner Dealer for a copy of the 1989 fiberglass catalog.



Our fiberglass lineup for 1989 is new and exciting. New styles and colors. Each boat is individually constructed by skilled hands. Hour after hour. Detail after detail. It's the only way to insure quality. And it's the only way we build our fiberglass boats. That's one reason our 5 year transferable warranty is one of the best around. Quality. It's what we build.

CRESTLINER, INC.

Crestliner, Inc. A Genmar Company • 609 13th Avenue N.E. • Little Falls, MN 56345 • (612)632-6686
Nordican Boat Company, Inc. • 130 W. Gore St. • Thunder Bay, Ontario P7E 3V9 • (807)475-4244

Sold and Serviced By: