

1990
CRESTLINER
BOATS



*From our family
to yours*



*Quality, Innovations
and Style
you'll find only from
Crestliner.*

Catalog Highlights:

- **Aluminum Runabouts and Cruisers**
Pages 4-15
- **Aluminum Fishing Boats**
Pages 16-28
- **Fiberglass Boats**
Pages 29-33

On the Cover:

A Crestliner family enjoying a relaxed summer afternoon. Their new V170 Phantom Fish & Ski is all decked out with a bow conversion, stern conversion and SST—innovations only available from Crestliner. The result—a perfect boat for their family needs.

Family Runabouts

Families are what Crestliner boats are all about.

The beauty, strength and safety of welded, rivet-free deep V construction. An incredible 20/10 year, industry-leading, transferable warranty. Patented innovations, style and performance. Crestliner—building the world's finest aluminum family pleasure boats.

And this year we've made it easier than ever for you to choose the Crestliner boat that's just right for you and your family. All you have to do is choose the model and then the Sportfish, Runabout or Fish & Ski package that fits your family best.



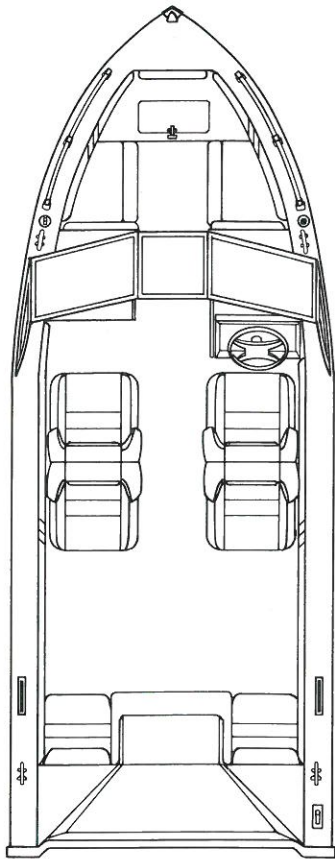
Conversion Bow

The patented Fish/Ski conversion bow makes Crestliner the best dual purpose runabout available. No one else offers a bow that easily converts in seconds from a fishing platform to comfortable bow seating—with no loose parts. It's a totally integrated unit and is available on all Fish/Ski packages.



Conversion Stern

The conversion stern gives you multiple stern options in one boat! First it's a comfortable full bench seat with back rest. By pivoting the backrest forward, a sturdy fishing platform is formed, complete with storage or livewell. Add pedestal and swivel seat and your fishing conversion is complete.

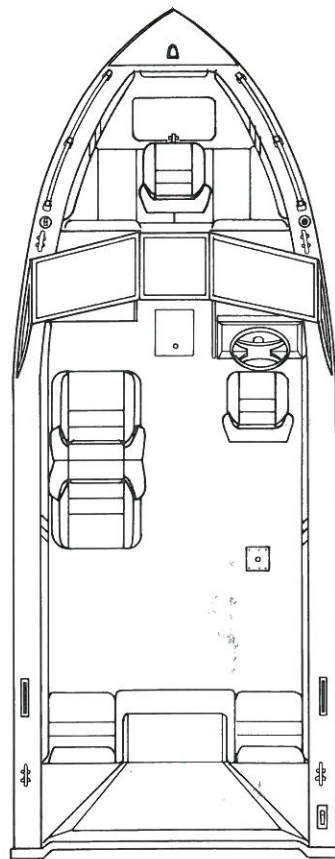


Standard Runabout

If your lifestyle is strictly fun-in-the-sun, namely skiing, tubing, sunning or just cruising around, the Runabout package is the right choice for you. There are two laydown seats, two stern jump seats and cushioned seating in the bow.

Standard Runabout package includes:

- Jumpseat transom
- Coaming pads
- Cushioned bow seating
- 2 laydown seats

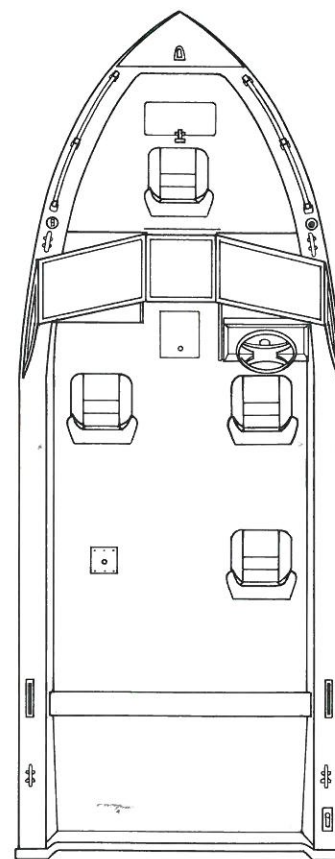


Fish & Ski

If you want to add a little serious fishing to your fun-in-the-sun, the Fish & Ski package is the boat for you. Fish & Ski features include the patented conversion bow with livewell, trolling motor outlet, rod locker and two swivel seats while retaining one laydown seat and the stern jump seats.

Fish & Ski package includes:

- Jumpseat transom
- Coaming pads
- Conversion bow w/livewell
- Rod storage, starboard
- Laydown seat, port
- 2 swivel seats, starboard
- Trolling motor outlet



Sportfish

And if serious family fishing is your priority, look no further than the Crestliner Sportfish package. You'll find swivel fishing chairs and two rod lockers behind a full windshield and a casting platform, with livewell and trolling motor outlet in the bow.

Sportfish package includes:

- Wide transom
- No coaming pads
- Solid front platform w/livewell
- Rod storage port & starboard
- Trolling motor outlet
- Swivel fishing chairs, (3 in 16' & 17' models; 4 in 18' to 22' models)



SST Transom

The patented SST (Space Saver Transom) is an incredible innovation that adds a foot of cockpit length and provides all the advantages of stem bracket type mounts at less cost and without that add-on look. The SST is an integral part of the welded hull and also provides for suntop storage on outboard boats. The SST—another innovation you will find only from Crestliner.



The Pocket

Crestliner's new Pocket allows you to add a kicker outboard to your stem drive boat without an add-on bracket. The Pocket is a mini-outboard transom designed and built into the boat hull. No additional parts are needed. Another innovation you'll find only from Crestliner. (Patent applied for)

It's your choice—from fishing machine to pure pleasure boat or something in between.

*From our family
to yours*

Mirage



V160 Mirage Fish & Ski SST

Family fun in the summertime sun. That's what Crestliner Mirage is all about! Whether you're partial to skiing, fishing or just cruising, Mirage is truly the all-purpose, entry-level family powerboat for you. Easy to trailer. A dream to drive. And available in standard runabout, sportfish, or Crestliner's popular fish/ski conversion package. Take your pick of the compact V 150 or the bigger V 160. Whatever model you choose, you can be sure Mirage will keep your family smiling for years to come.

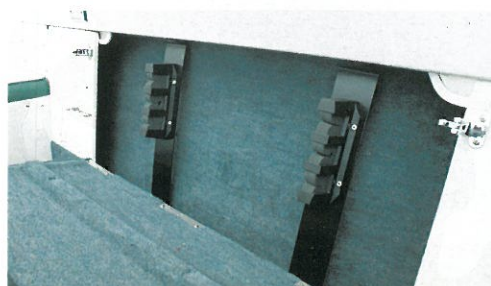
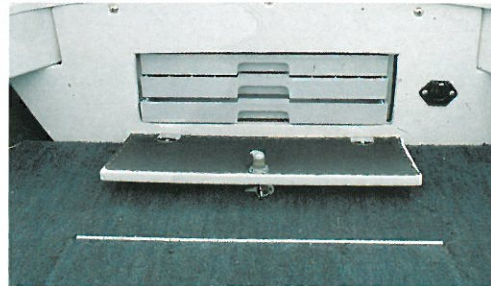




V160 Mirage Sportfish

V160 Mirage

	V160	V150
Length	16'5" (5.0m)	15' (4.6m)
Max Beam	78" (198cm)	78" (198cm)
Transom Beam	76" (193cm)	76" (193cm)
Cockpit Depth	26" (66cm)	24" (61cm)
Weight	1020# (463kg)	800# (363kg)
Weight Cap.	1300# (590kg)	1100# (499kg)
Fuel Cap.	22 gal (83L)	22 gal/opt (83L)
Bottom Gauge	.090	.080
Max H.P.	100	80



V150 Mirage

Phantom 17



V175 Phantom

It's a blast! In both performance and family versatility. Crestliner's Phantom 17 gives you the smoothest ride, most responsive handling of any 17-foot runabout design on the market. And what a looker! With a wide variety of interior appointments and color options, the Phantom sportfish, runabout or fish/ski models are head-turners from the word "Go!" Not to mention the fact you can choose from outboard or I/O power—even the innovative SST transom. Now *that's* versatility. But then, that's Crestliner!



▲ V175 Phantom Shown With Optional Tonneau and Cockpit Cover

	V175	V170
Length	17'6" (5.3m)	17'6" (5.3m)
Max Beam	83" (211cm)	83" (211cm)
Transom Beam	83" (211cm)	83" (211cm)
Cockpit Depth	27" (69cm)	27" (69cm)
Weight	1960# (890kg)	1075# (488kg)
Weight Cap.	1100# (499kg)	1425# (647kg)
Fuel Cap.	22 gal (83L)	22 gal (83L)
Bottom Gauge	.090	.090
Max H.P.	175	125



V170 Phantom Sportfish

V170 Phantom Fish & Ski

Phantom 18



V185 Phantom Sportfish

Deep. Wide. Stable. With the quickness and handling of much smaller runabouts. You're talking Crestliner's Phantom 18. Plenty of storage for everything you need to enhance a full-blown weekend of family entertainment. Your choice of runabout, sport-fish or fish/ski models. And, equipped with the optional SST roomer, the Phantom 18 offers the roomiest cockpit of any 18-foot powerboat available anywhere. Comfort, performance, versatility. And great looks, to boot! All the right reasons to make Crestliner's Phantom 18 *your* family runabout.



▲ The SST Allows For Suntop Storage On An Outboard Boat.



▲ 2-Position Stern Bench Seat ▼



	V185	V180
Length	18'2" (5.5m)	18'2" (5.5m)
Max Beam	87" (221cm)	87" (221cm)
Transom Beam	87" (221cm)	87" (221cm)
Cockpit Depth	28" (71cm)	28" (71cm)
Weight	2080# (944kg)	1250# (568kg)
Weight Cap.	1625# (738kg)	1625# (738kg)
Fuel Cap.	31 gal (117L)	31 gal (117L)
Bottom Gauge	.100	.100
Max H.P.	205	150



V180 Sportfish



V180 Phantom Fish & Ski SST

Sabre Series

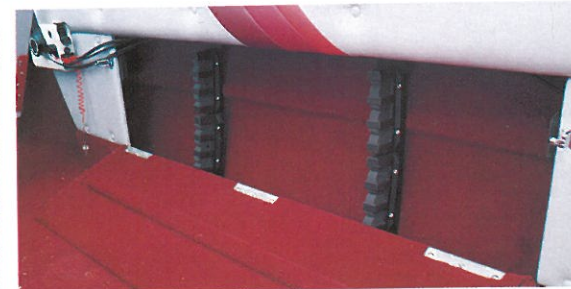


V205 Sabre

This is it! The big family powerboat you've been looking for. Crestliner's Sabre runabout series offers top-of-the-line big boat styling and performance. Extra-wide beams—up to 8½ feet! Extra-deep cockpit. Extra-spacious floor area and storage compartments galore. As a matter of fact, everything about the Sabre runabout is, in a word, extraordinary. Available in a variety of safe, stable, comfortably appointed models from 19 to 22 feet, Sabre is truly the boat your family has been dreaming of.



V190 Sabre Sportfish SST



▲ Lockable Rod Lockers

▼ Designer Drink Holders





- V190
- 19'
- (5.8m)
- 96"
- (244cm)
- 96"
- (244cm)
- 30"
- (76cm)
- 1450#
- (658kg)
- 1750#
- (795kg)
- 34 gal.
- (129L)
- .100
- 185



V225 Sabre (closed bow option)

Vanguard



V215 Vanguard Cuddy

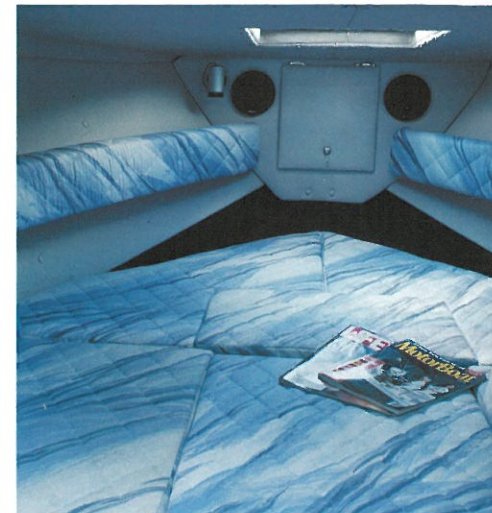
Good looks and styling that set new trends in aluminum watercraft design. That's how Vanguard got its name. And its reputation is spreading like wildfire. The optional sport package on the I/O Vanguard runabouts includes tinted plex wrap-around windshield (in lieu of conventional windshield and suntop), bucket seats, bow table, bow lounge cushion, stern bench seat with sundeck, cooler with roll-out storage and aluminum foiled engine compartment. A sturdy, integrated swim platform and ski storage. Vanguard. Engineered for your sheer pleasure and comfort. And the pride you'll feel in owning one is something that simply can't be described.



V215 Vanguard Sport



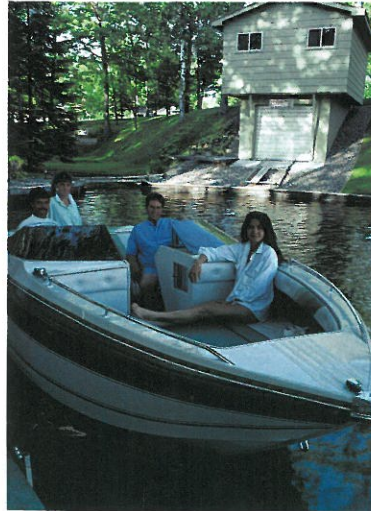
▼ Roll-out Cooler Storage





V195 Vanguard

	V215C	V215	V195	V190
Length	21'5" (6.5m)	21'5" (6.5m)	19'2" (5.8m)	19'2" (5.8m)
Max Beam	96" (244cm)	96" (244cm)	86" (218cm)	86" (218cm)
Transom Beam	96" (244cm)	96" (244cm)	86" (218cm)	86" (218cm)
Cockpit Depth	34" (86cm)	34" (86cm)	27" (69cm)	27" (69cm)
Weight	3070# (1393kg)	2800# (1270kg)	2400# (1089kg)	1493# (678kg)
Weight Cap.	1750# (795kg)	1750# (795kg)	1625# (738kg)	1625# (738kg)
Fuel Cap.	34 gal (129L)	34 gal (129L)	31 gal (117L)	31 gal (117L)
Bottom Gauge	.100	.100	.100	.100
Max H.P.	260	260	205	150



▲ Bow Cushion Lounge



V190 Vanguard

Sabre Cruiser



V245 Sabre Midberth D.C.

They're the finest aluminum cruisers available anywhere. And they're Crestliner quality from stern to stern. Relax in spacious cuddy and midberth cabins, luxurious and stylishly functional. Options include a fully equipped galley, enhanced with an array of features, including a microwave oven! Up top, the Sabre cruisers are elegantly appointed and innovatively designed. Built-in serving credenza. Rich woodgrain trim. Deep, wave-cushioning seating. All this in a high-performance, totally trailerable cruiser that you'll love the moment you step aboard.



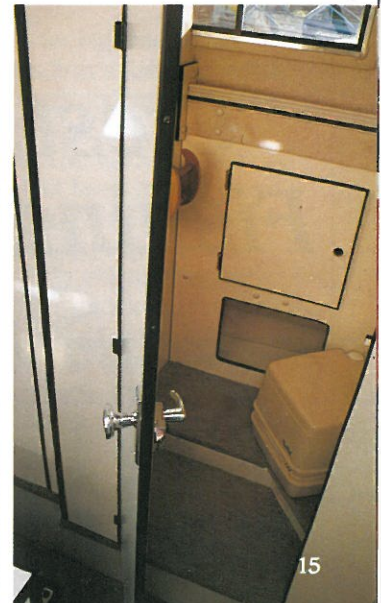
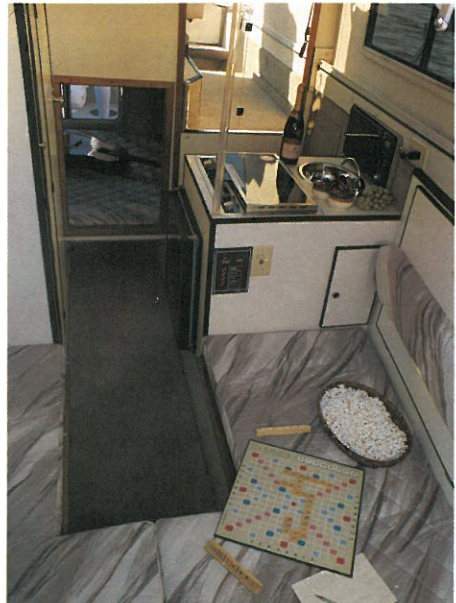
V225 Sabre D.C.





V275 Sabre Midberth D.C.

	V275 MB/DC	V245 MB/DC	V245 D/C	V225 D/C
Length	26'8" (8.1m)	24'4" (7.4m)	24'4" (7.4m)	22'4" (6.8m)
Max Beam	116" (295cm)	102" (259cm)	102" (259cm)	102" (259cm)
Transom Beam	116" (295cm)	102" (259cm)	102" (259cm)	102" (259cm)
Cockpit Depth	39" (99cm)	35" (89cm)	35" (89cm)	35" (89cm)
Weight	4990# (2262kg)	3950# (1792kg)	3650# (1656kg)	3350# (1520kg)
Weight Cap.	2000# (908kg)	2000# (908kg)	2000# (908kg)	1750# (795kg)
Fuel Cap.	98 gal (371L)	52 gal (197L)	52 gal (197L)	41 gal (155L)
Bottom Gauge	.125	.100	.100	.100
Max H.P.	280 single 175Twin	260	260	260





Designed by the pros. Tournament-tested. Crestliner fishing boats are the ultimate in angling comfort and efficiency. The deep V, rivet-free hull affords exceptional ride and stability and precision boat control with absolutely no pounding—even in the roughest conditions. Well-cushioned swivel seats and Crestliner's fishing-smart layouts give you hours of relaxation on the water. Aerated livewells. Ample storage. Rod and electronics lockers. All built with durability, quality and convenience foremost in mind. From the top-of-the-line V275 Sabre Sportfish, to the Team Crestliner Viking Deluxe, to the popular Fish Hawk Classic, these boats are serious fishing machines. And, unlike other brands, you can outfit your Crestliner with a variety of package options to match your personal fishing style.

- Viking Deluxe**
- Convenience Package**
- Bow bench with livewell (or stern livewell on console models)
 - Rod storage, port.
- Team Crestliner Package**
- Casting platform w/livewell
 - Rod storage, starboard
 - Trolling motor outlet
 - Storage/tackle trays, starboard
 - "Team Crestliner" decals
 - Air ride pedestals • Baitwell, port
 - Electronics compartment
 - Storage compartment, port

- Fish Hawk**
- Convenience Package**
- Bow bench w/livewell
 - Rod storage, port
- Classic Package**
- Casting platform w/livewell
 - Rod storage, port • Tackle trays
 - Trolling motor outlet
- Muskie Pro**
- Classic Package**
- Casting platform w/livewell
 - Tackle trays • Trolling motor outlet

*From our family
to yours*

Crestliner Is Serious Fishing, Top To Bottom, Stem To Stern

TEAM CRESTLINER

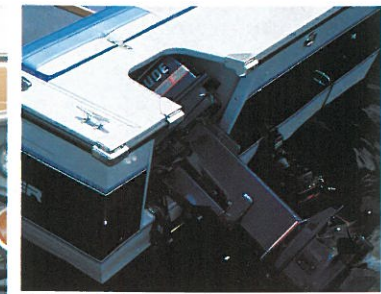


- | | | | | | |
|---|--|--|---|--|--|
| Tony Dean (not shown)
Television Host
"Tony Dean Outdoors"
Pierre, SD | Mark Dorn
Writer/Guide
In-Fisherman Staff
Brainerd, MN | Al & Sue Strelow
Tournament Pros
MWC Husband/Wife
"Team of the year"
Onamia, MN | Chris Carlson
Writer/Guide
Tournament Pro
Elk River, MN | Cliff Haugland
Writer/Guide
Tournament Pro
North Liberty, IA | Ken Hutchinson
Guide
Tournament Pro
Pierre, SD |
|---|--|--|---|--|--|

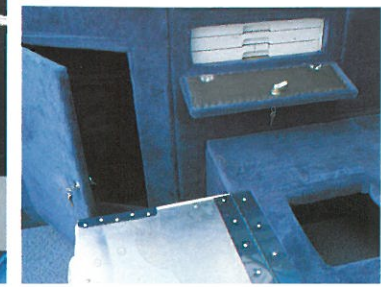
Sabre Sportfish



V275 Sabre Sportfish



▲ New Outboard Pocket



Big water boats for big-time fishing excitement! Crestliner's Sabre Sportfish V275 has the mass and muscle to take on any body of water and any game fish that swims. The V275 boasts a whopping 9½-foot beam and an array of innovative features, all incorporated to make your fishing more efficient. Built-in tackle trays and rod storage. Easy-access downrigger locations. Expansive, deep cockpit, roomy cabin, aerated livewells. The list goes on and on. The Sabre Sportfish V275.

LENGTH	BEAM	WEIGHT	WEIGHT CAP.	FUEL CAP.	BOTTOM GAUGE	MAX H.P.
26'8"	116"	4850#	2000#	98 gal.	.125	280 single
(8.1m)	(295cm)	(2202kg)	(908kg)	(371L)		175 twin

Sabre G.L.



V245 Sabre G.L. (with hardtop option)

A slightly smaller version of the Sabre V275, the Great Lakes series offers up to an 8½ foot beam and all the innovations and options available with the larger model. And, just like the big one, Sabre GL is engineered for angling efficiency. Take your pick of I/O power, including the optional auxiliary motor pocket, or give yourself even more room with the hull-integrated SST transom. It's up to you to personalize your Sabre to match your exact fishing preferences. And that's why Crestliner leads the way in big water fishing machines.



▲ Roomy And Comfortable Cabins





V220 Sabre G.L. SST

	V245G.L.	V240G.L.	V225G.L.	V220G.L.	V205G.L.	V200G.L.
Length	24'4" (7.4m)	24'4" (7.4m)	22'4" (6.8m)	22'4" (6.8m)	20'4" (6.2m)	20'4" (6.2m)
Max Beam	102" (259cm)	102" (259cm)	102" (259cm)	102" (259cm)	96" (244cm)	96" (244cm)
Transom Beam	102" (259cm)	102" (259cm)	102" (259cm)	102" (259cm)	96" (244cm)	96" (244cm)
Cockpit Depth	35" (89cm)	35" (89cm)	35" (89cm)	35" (89cm)	30" (76cm)	30" (76cm)
Weight	3500# (1588kg)	2350# (1066kg)	3250# (1474kg)	2100# (953kg)	2970# (1348kg)	1820# (826kg)
Weight Cap.	2000# (908kg)	2000# (908kg)	1750# (795kg)	2000# (908kg)	1750# (795kg)	2000# (908kg)
Fuel Cap.	52 gal. (197L)	52 gal. (197L)	41 gal. (155L)	41 gal. (155L)	34 gal. (129L)	34 gal. (129L)
Bottom Gauge	.100	.100	.100	.100	.100	.100
Max H.P.	260	230	260	230	230	205



▼ Built-in Tackle Trays



V200 Sabre G.L. SST

Sabre WAC



V220 Sabre WAC

Brand new for 1990 is the sleek, wave-slicing Sabre Walk-Around Cuddy. It's the only aluminum walk-around cuddy on the market, and the engineering is Crestliner all the way. The deep V design offers exceptional performance, even in the roughest conditions. And the easy-access walk-around deck, complete with pulpit, gives you plenty of room for lounging, fishing or docking, with minimal cabin space compromise. Naturally, all the Sabre options are available to make your new 22' or 24' WAC a completely personalized big water cruiser. Quality, innovation and style, just the way you want it.



Offshore

The New Sabre Walk-Around Cuddy is a blue water fisherman's dream! The V245 is shown with our new integrated outboard motor pocket.



	V245WAC	V240WAC	V225WAC	V220WAC
Length	24' 4" (7.4m)	24' 4" (7.4m)	22' 4" (6.8m)	22' 4" (6.8m)
Max Beam	102" (259cm)	102" (259cm)	102" (259cm)	102" (259cm)
Transom Beam	102" (259cm)	102" (259cm)	102" (259cm)	102" (259cm)
Cockpit Depth	35" (89cm)	35" (89cm)	35" (89cm)	35" (89cm)
Weight	3500# (1588kg)	2350# (1066kg)	3250# (1474kg)	2100# (953kg)
Weight Cap.	2000# (908kg)	2000# (908kg)	1750# (795kg)	2000# (908kg)
Fuel Cap.	52 gal. (197L)	52 gal. (197L)	41 gal. (155L)	41 gal. (155L)
Bottom Gauge	.100	.100	.100	.100
Max H.P.	260	230	260	230

V245 Sabre WAC



Center Console— Here's the roomy, center console solution to inland or offshore fishing versatility. Stable. Roomy. And it's available with a durable foul weather curtain and spray hood for poor weather conditions.

	LENGTH	BEAM	COCKPIT DEPTH	WEIGHT	WEIGHT CAP.	FUEL CAP.	BOTTOM GAUGE	MAX H.P.
V200 CC	20' 4" (6.2m)	96" (244cm)	30" (76cm)	1520# (690kg)	2000# (908kg)	34 gal. (129L)	.100	205
V190 CC	19' (5.8m)	96" (244cm)	30" (76cm)	1350# (613kg)	1750# (795kg)	34 gal. (129L)	.100	185
V180 CC	18' 2" (5.5m)	87" (221cm)	28" (71cm)	1150# (522kg)	1625# (738kg)	31 gal. (117L)	.100	150

V200 Center Console



Viking



V170 Viking Console



V170 Viking Tiller

The Viking Deluxe features Crestliner's revered deep V, rivet-free hull for the smoothest, steadiest ride you've ever experienced in a fishing rig, even in the roughest water. Designed by the pros and tournament-tested, Viking Deluxe is the best looking, hardest working fishing machine you can own. And the V170 Viking is the only 17-foot aluminum fishing boat built to handle today's largest tiller-operated outboards. So why wait? Now is the time to move up to the ultimate—the Viking Deluxe.



▲ Lockable Electronics Compartment



V170 Viking Console SST

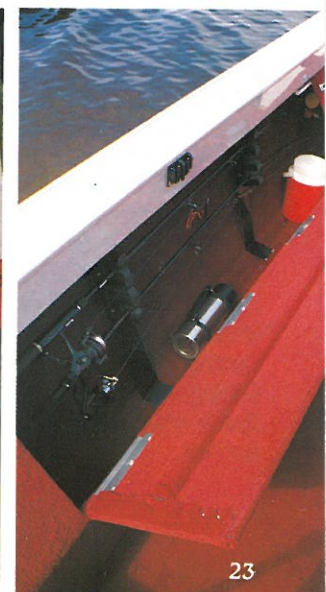


V160 Viking Tiller

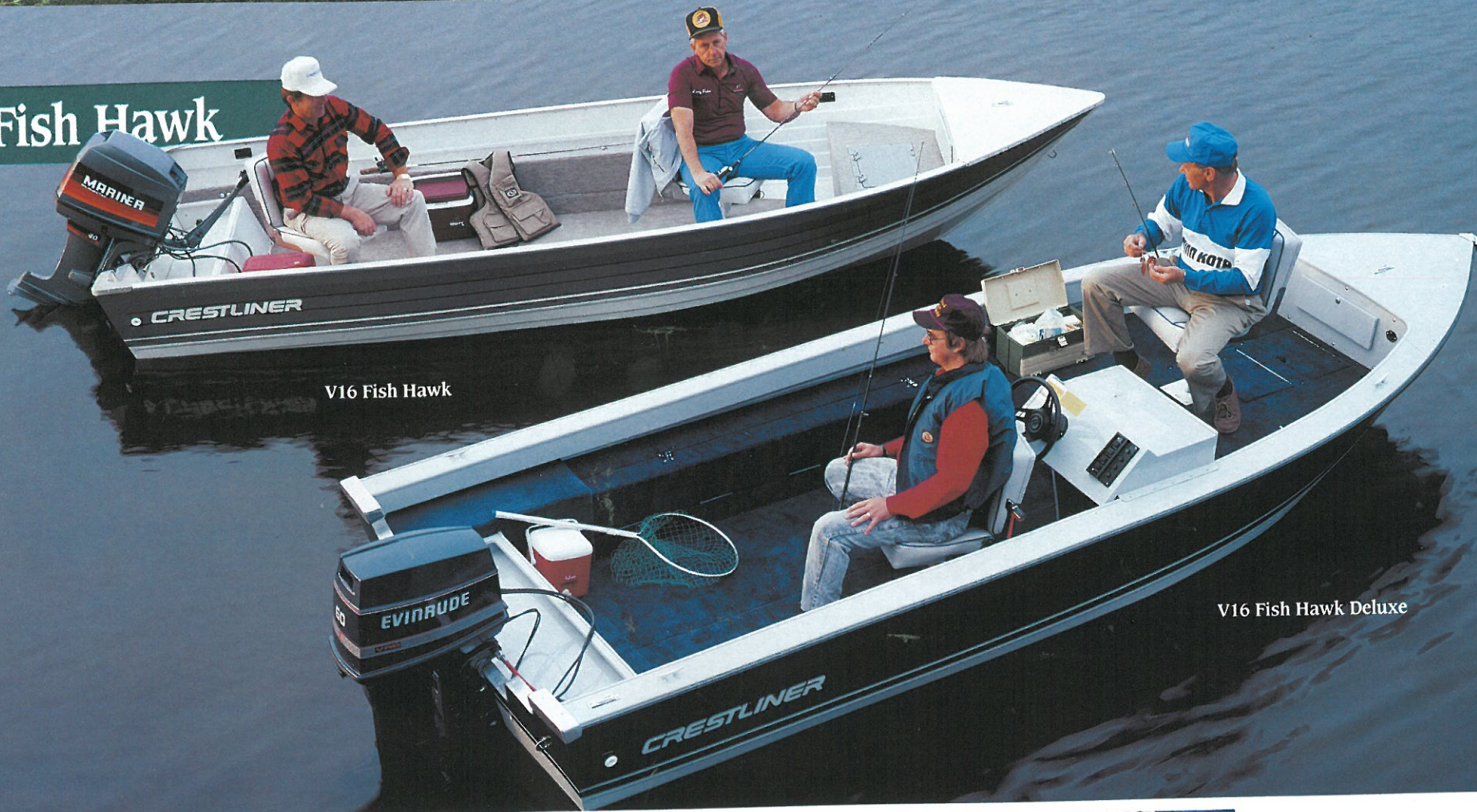


V160 Viking Console

	V170	V160
Length	17'6" (5.3m)	16'5" (5.0m)
Max Beam	83" (211cm)	78" (198cm)
Transom Beam	83" (211cm)	78" (198cm)
Cockpit Depth	27" (69cm)	26" (66cm)
Weight	810# (368kg)	710# (322kg)
Weight Cap.	1150# (522kg)	1150# (522kg)
Fuel Cap.	22 gal (83L)	22 gal (83L)
Bottom Gauge	.090	.090
Max H.P.	80 tiller 115 cons.	60 tiller 90 cons.



Fish Hawk



V16 Fish Hawk

V16 Fish Hawk Deluxe

If you're looking for a lower-priced fishing boat, but still demand V hull performance, there's only one name to look for. Fish Hawk. Fish Hawk and Fish Hawk Deluxe both feature Crestliner's smooth, deep V design, all the way to the transom—something no other boat in this price range can offer. And you can outfit your rig completely with pedestals, livewell, lockers, and casting platform for a truly personalized fishing machine. It's all up to you. And that's what sets Crestliner apart from the rest.



V14 Fish Hawk

V14 Fish Hawk Deluxe



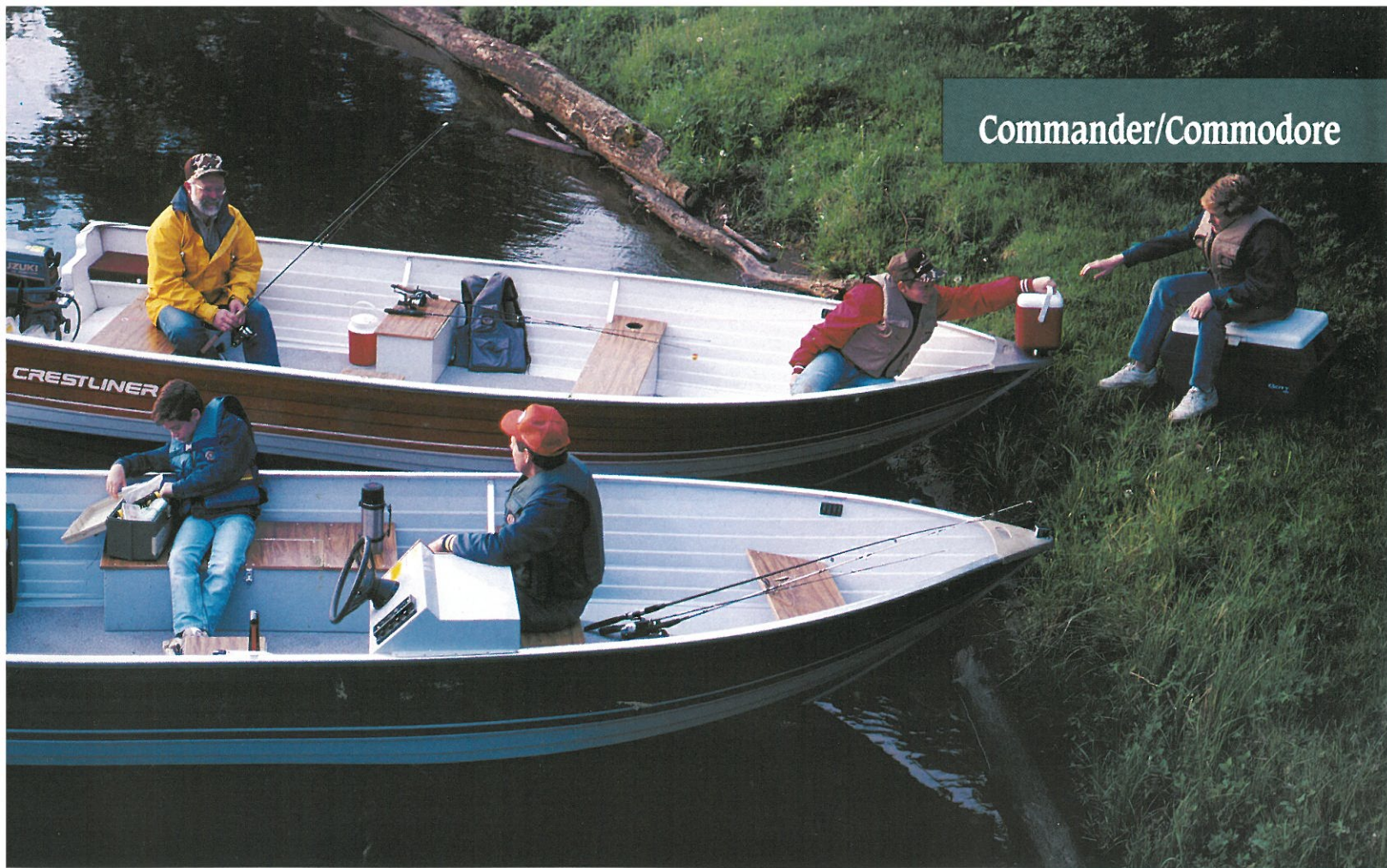
▲ Aerated livewell/Baitwell



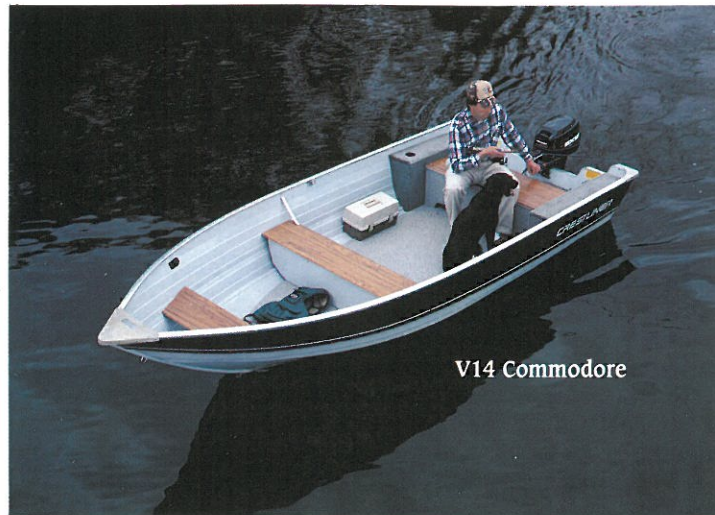
▲ Lockable Electronics Compartment

	V14 Fish Hawk	V16 Fish Hawk	V14 F.H. Dlx.	V16 F.H. Dlx.
Length	14'5" (4.4m)	16'8" (5.1m)	14'5" (4.4m)	16'8" (5.1m)
Max Beam	72" (184cm)	75" (191cm)	72" (184cm)	75" (191cm)
Transom Beam	72" (184cm)	75" (191cm)	72" (184cm)	75" (191cm)
Cockpit Depth	22" (56cm)	22" (56cm)	22" (56cm)	22" (56cm)
Weight	570# (259kg)	640# (291kg)	620# (281kg)	690# (313kg)
Weight Cap.	925# (420kg)	1150# (522kg)	925# (420kg)	1150# (522kg)
Bottom Gauge	.080	.080	.080	.080
Max H.P.	40	55 tiller 70 console	40	60 tiller 80 console

Commander/Commodore



	V14 Commodore	V16 Commander
Length	14'5" (4.4m)	16'8" (5.1m)
Max Beam	69" (175cm)	75" (191cm)
Transom Beam	69" (175cm)	75" (191cm)
Cockpit Depth	22" (56cm)	22" (56cm)
Weight	570# (259kg)	640# (291kg)
Weight Cap.	925# (420kg)	1150# (522kg)
Bottom Gauge	.080	.080
Max H.P.	40	55 tiller 60 console



V14 Commodore

The most affordable deep V Crestliners, Commander and Commodore offer superior performance to any other aluminum boat in their class. Bench seating. Flat floors. Light weight. The simple essentials for a no-nonsense, long-lasting, tried-and-true fishing rig. If you're looking for wave-taming, deep V handling and stability at an entry level price, Commander and Commodore are the best choices you'll find anywhere.

Muskie Pro



Muskie Pro 16



Muskie Pro 16W

Your basic fishing boat, but with the quality and options you only get from Crestliner. The Muskie Pro series offers carpeted floors, rod lockers, and pedestal seating standard, with the availability of platforms, consoles and other options to deck your rig out just the way you want it. If you fish occasionally, but seriously, there's no better choice than Crestliner Muskie Pro.



Muskie Pro 14W

	MP14W	MP16	MP16W
Length	14'1" (4.3m)	16'3" (5.0m)	16'3" (5.0m)
Max Beam	68" (174cm)	68" (174cm)	77" (197cm)
Transom Beam	66" (168cm)	66" (168cm)	68" (174cm)
Cockpit Depth	21" (53cm)	21" (53cm)	23" (58cm)
Weight	420# (191kg)	490# (222kg)	600# (272kg)
Weight Cap.	925# (420kg)	1250# (567kg)	1260# (571kg)
Transom	20"	20"	20"
Bottom Gauge	.064	.072	.080
Max H.P.	25	40	50



Ensign



Ensign 14

Ensign 14W

Ensign 16

Ensign 18W
18'
(5.5m)
77"
(197cm)
68"
(173cm)
36"
(92cm)
420#
(191kg)
1325#
(602kg)
60
20"
.080



Ensign 16W Tiller

Ensign 16W Console

Ensign 18W

Crestliner's most affordable fishing boat is a favorite of resorts and rental marinas because of its light weight and exceptional durability. For the very same reasons, the Ensign line is also popular with travelers who find themselves towing their boats a great deal of the time. And even though Ensign is the lowest-priced Crestliner, you still get the fine craftsmanship and superior quality that goes into every boat sporting the Crestliner name.

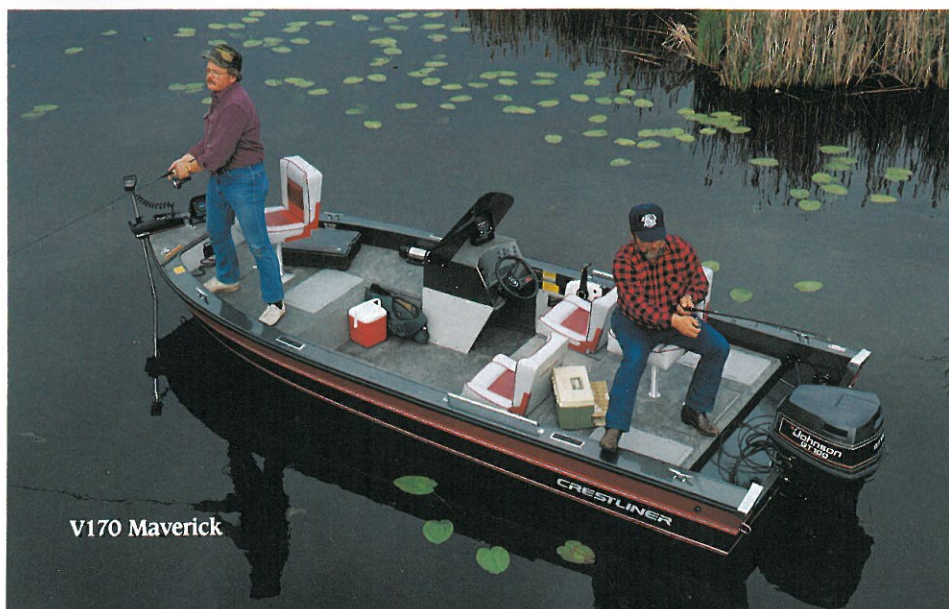
Maverick



V170 Maverick Twin Console

Now there's a bass boat that offers deep V performance, the durability of aluminum and the great looks of the big glass and glitter rigs. Maverick. A rocket out of the hole. A blur on the horizon. The stability to cut a turn like nothing else on the lake. With all the accessories you'll ever need for big-time bassin'.

LENGTH	BEAM	WEIGHT	WEIGHT CAP.	FUEL CAP.	MAX H.P.
17'3"	81"	1165#	1100#	22 gal.	125
(5.3m)	(206cm)	(529kg)	(499kg)	(83L)	



V170 Maverick





There's absolutely nothing like it—The performance of Crestliner Crusader Fiberglass Boats! The luxurious seating and deep pile carpet add inner beauty to enhance the distinct elegance of Crusader 16, 18 or 19 ft. models. Choose from outboard or I/O, which include features like integrated swim platforms, Euro wrap around windshields (18' and 19' models) and our new contemporary hull and deck designs. For the fishing purist Crestliner offers glass fishing rigs. The Crusader Anglers—built for dryness, smoothness, and fishing pleasure. The newly designed interiors

feature amenities at your fingertips. Baitwells, livewells, and tackle trays—it's all standard on the Crestliner Angler Series.

Experience Crestliner Crusader for 1990 and be swept away in a new wave of excellence leaving the rest of the industry in its wake.

*From our family
to yours*

*The Quality Is
Crestliner,
The Ride
Smooth As Glass*



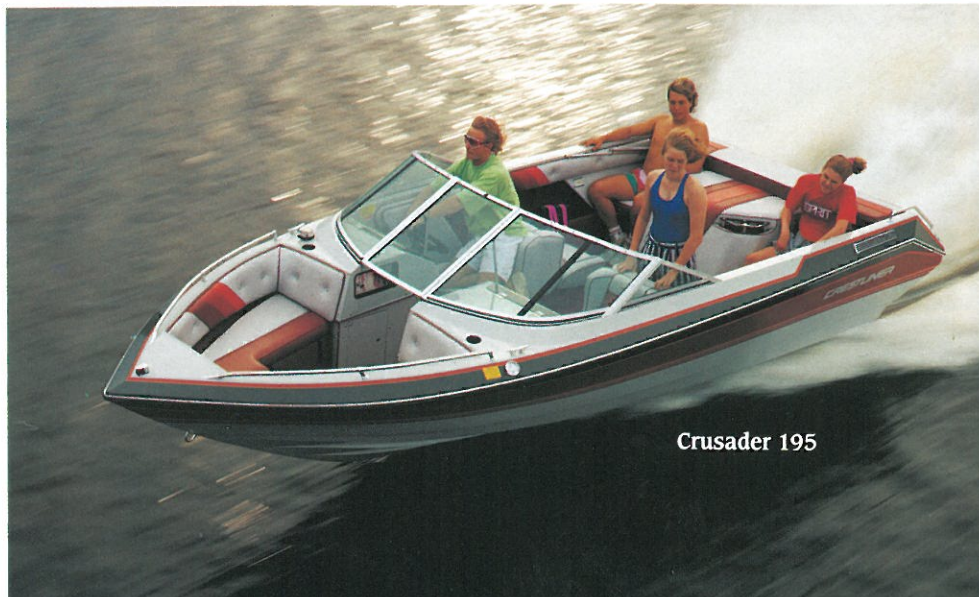
Crusader 18 & 19



Crusader 195

Crusader 190

Fiberglass runabouts made the Crestliner way! Sleek. Beautiful. Designed with your family's fun foremost in mind! And protected with a 5-year structural warranty. Crusader 18 and 19-foot open bow models feature a raked back bow configuration, wrap-around Euro-design windshield, ski and cooler storage, swim platform, even a sundeck complete with lounge seating. Choose from a wide variety of I/O power options, or go with your favorite outboard. With Crusader, it's all up to you and your family to decide—just the way it should be!



Crusader 195



▲ AM-FM Stereo Cassette and Glove Box Console





Crusader 185

	C195	C190	C185	C180
Length	19'2" (5.9m)	19'2" (5.9m)	17'9" (5.4m)	17'9" (5.4m)
Max Beam	93" (236cm)	93" (236cm)	88" (224cm)	88" (224cm)
Transom Beam	85" (216cm)	85" (216cm)	88" (224cm)	88" (224cm)
Cockpit Depth	30" (76cm)	30" (76cm)	26" (66cm)	26" (66cm)
Weight	2600# (1180kg)	1460# (663kg)	2260# (1026kg)	1120# (508kg)
Weight Cap.	1350# (613kg)	1350# (613kg)	1350# (613kg)	1350# (613kg)
Fuel Cap.	31 gal. (117L)	31 gal. (117L)	31 gal. (117L)	31 gal. (117L)
Max H.P.	260	175	205	150



Crusader 180



Crusader 16



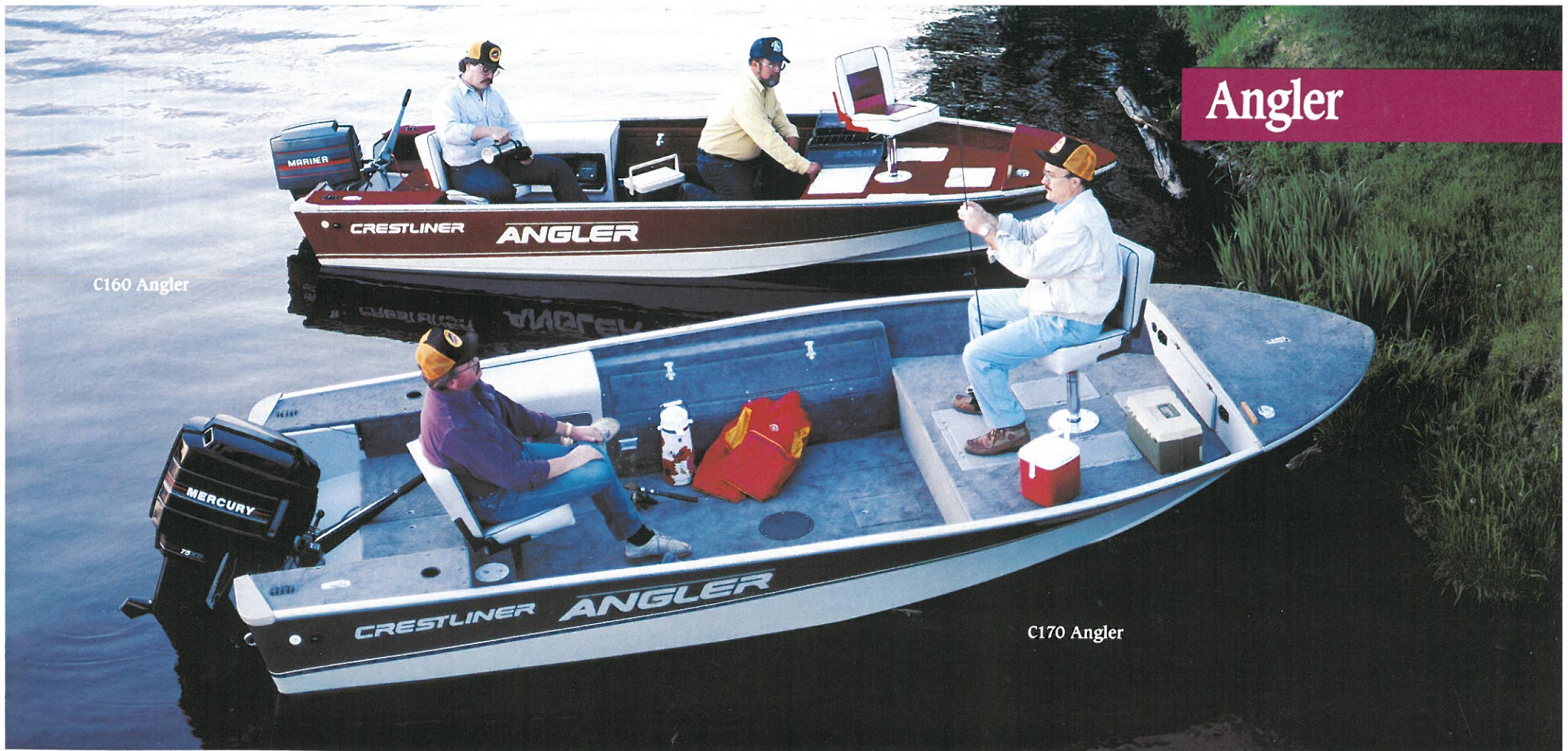
Crusader 165

Nimble. Sporty. With all the super Crestliner features and options available to deck these little beauties out just the way you want them. Take your pick of outboard or I/O power. Luxurious bucket seats. Convertible sun top. And your choice of a variety of color combinations. The Crusader 160 and 165 are real sizzlers, thanks to the new high performance deep V fiberglass hull, structurally guaranteed for five full years.

	LENGTH	BEAM	COCKPIT DEPTH	WGT.	WGT. CAP.	FUEL CAP.	MAX H.P.
C165	16' (4.9m)	92" (235cm)	26" (66cm)	1900# (864kg)	1350# (613kg)	31 gal. (117L)	130
C160	16' (4.9m)	92" (235cm)	26" (66cm)	1200# (546kg)	1375# (624kg)	31 gal. (117L)	100



Angler



C160 Angler

C170 Angler



C160 Angler Console



When Crestliner says "serious fishing," we mean it. And the fiberglass Crusader Angler series says it loud and clear. Wide, expansive floor and deck areas provide plenty of room to move around. Spacious lockers and storage compartments keep gear safe and out of the way. Aerated livewells are standard. Choose from two popular lengths, in either console or tiller models. Each with Crestliner's deep V hull design and a liberal 5-year structural warranty.

	LENGTH	BEAM	TRANSOM BEAM	COCKPIT DEPTH	WGT.	WGT. CAP.	FUEL CAP.	MAX H.P.
C170	17'11" (5.2m)	88" (224cm)	78" (198cm)	22" (56cm)	1125# (511kg)	1100# (499kg)	31 gal. (117L)	80 Tiller 125 Console
C160	16' (4.9m)	78" (198cm)	76" (194cm)	21" (53cm)	760# (345kg)	1125# (511kg)	18 gal. (68L)	60 Tiller 80 Console

Options & Specifications

Aluminum

	Power	OUTBOARD TRANSOM STYLE		Aerator, automatic timer	Armrest, fishing chair	Auxiliary motor pocket	Baitwell	Bases, fishing chair	Bilge pump	Bow rails	Bucket seats/captain's chairs	Bunk filler cushions	Carpet, plush	Casting platform	Chart/cigarette lighter	Closed bow	Cockpit cover	Command instrumentation	Console	Conversion fish/ski bow	Conversion stern, 2 pos.	Courtesy lights-cockpit	Deck cleat & chocks	Depth finder, in-dash	Docking lights	Dockside power w/charger	Downrigger power outlets (4)	Drinktroughs	Electronics Compartment	Fishing chairs	Flotation, basic	Flotation, level	Foul weather curtain	Fuel tank, under-floor	Fuel tank, auxiliary under-floor	Galley w/sink, stove & ice box	Glove box, lockable	Head, marine	Horn	Livewell w/aerator	Navigation lights	Pulpit, bow	Refrigerator	Rod holders	Rod storage compartment	Rope grippers	Salt water package	Shower w/hot water system	Ski tow ring	Spotlight, electric remote	Steering, dual cable	
		Jumpseat	SST																																																	Wide splash well
V275 Sabre Midberth DC	I/O	1.)				O		S	S		S	S		O	O	S					S	S	O	O	O	O	S			S		S	S	S	S	S	S	S	S	O	O	O		O	O	O						
V275 Sabre Sportfish	I/O	1.)		O	O	O	O	S	S	S-2	S	O		O	O	S					S	S	O	O	O	O	S		O	S		O	S		O	S	S	O	S	O	O	S	S		O	O		O	O			
V245 Sabre Midberth DC	I/O	1.)				O		S	S		S	S		O	O	S					S	S	O	O	O	O	S			S		S	O	S		S	S		S	O	O	O		O	O		O	O				
V245 & V225 Sabre Day Cruiser	I/O	1.)				O		S	S	S-2	S	S		O	O	S					S	S	O	O	O	O	S			S		O	S		O	S	S		S	O	O	O		O	O		O	O				
V245, V225 & V205 Sabre GL	I/O			O	O	O		O	S	S	O	S	O		O	O	S				S	S	O	O	O	O	S		S-2	S		O	S	2.)	O		S	S	O	S	O	O	S	O		O	O		O	O		
V240, V220 & V200 Sabre GL	O/B	O		O	O			O	S	S	O	S	O		O	O	S				S	S	O	O	O	O	S		S-2	S		O	S	2.)	O		S	S	O	S	O	O	S	O		O	O		O	3.)		
V245 & V225 Sabre WAC	I/O			O	O			S	S	S-2	S	O		O	O	S					S	S	O	O	O	O	S			S		O	S	O			S	S	S-2	S	S		S		O		O					
V240 & V220 Sabre WAC	O/B	S		O				S	S	S-2	S	O		O	O	S					S	S	O	O	O	O	S			S		O	S	O			S	S	S-2	S	S		S		O		O		O	3.)		
V225, V205 & V195 Sabre	I/O			O	O	O		P	S	S	O		S	P	O	O	O	S		P		S	O	O	O	O	S		P	S		O	S	2.)			S	P	S		P	P		O		O						
V220, V200 & V190 Sabre	O/B	S	O	P	O	O		P	S	S	O		S	P	O	O	O		P	O		S	O	O	O	O	S		P	S	^S V190	O	S	2.)			S	P	S		P	P		O		O		3.)				
V200 & V190 Sabre Center Console	O/B	S		O			S	S-2	S	S	O		O	O	O			S			S	O	O	O	O	S	S	S-2	^S V190	O	S			S		S	O	S		S	O		O		O		3.)					
V215 Vanguard Cuddy	I/O							S	S	S-1	S	S		O	O	S					S	S	O			S		S		S		S			S	S	S		S	S				O	S	O						
V215 & V195 Vanguard	I/O							S	S	P	P	S		O	O	S					S	O	O			S		S		S		S			S	S	S		S	S				O	S							
V190 Vanguard	O/B							S	S	P	P	S		O	O	S					S	O	O			S		S		S		S			S	S	S		S	S				O		3.)						
V180 Phantom Center Console	O/B	S		O			S	S-2	S	S	O		O	O	O			S			S	O	O		O	S	S	S-2		S	O	S			S	S	O	S		S	O		O		O		3.)					
V185 & V175 Phantom	I/O			O	O			P	S	S		S	P	O	^O V185	O	S		P		S	O	O		O	S		P	S		S		^S V175	S	P	S		P	P		O		O									
V180 & V170 Phantom	O/B	S	O	P	O	O		P	S	S		S	P	O	^O V180	O	O		P	O		S	O	O		O	S		P	S		S		^S V170	S	P	S		P	P		O		O		3.)						
V170 Maverick	O/B		S	O		O	S-2	S				S	S-2	O			^{S-1} _{O-2}				S		O			S	S-2		S	S		O	S	S-2	S		S	S		S	S		O									
V160 Mirage	O/B	S	O	P	O			P	S	S		S	P	O	O	O		P	O		S	O	O			S	O		S		S		S		S	S	P	S		P	P		O									
V150 Mirage	O/B		S	O			S-2	S	O			S		O	O		O				S	O	O			S	S-2		S	O		S		S	O	S		O	O		O		O									
V170 & V160 Viking Deluxe	O/B		O	S	O	O		P	S-2	S			S	P	O		O	O		S		O			O	O	P	S-2		S	S				O	P	S		S	P	O											
Fiberglass																																																				
Crusader 195 & 185	I/O							S	S	O		S		O	O	S					S	O	O			S		S		S		S		S	S	S					O		S									
Crusader 190 & 180	O/B	S						S	S	O		S		O	O	S					S	O	O			S		S		S		S		S	S	S					O				3.)							
Crusader 165	I/O							S	S	O		S		O	O	S					S	O	O			S		S		S		S		S	S	S					O		S									
Crusader 160	O/B							S	S	O		S		O	O	S					S	O	O			S		S		S		O		S	S	S					O											
Crusader 170 & 160 Angler	O/B			O	O		S	S-2	S			S	S	O		O					S	O			O	S	S	S-2		S	S				O	S	S		S	S	S											

S - Standard feature

O - Optional feature

P - Available as part of package option

1.) Available upon special request

2.) Available on 22' & 24' models

3.) Recommended for 150 horsepower and above

Standard Runabout

Standard Runabout package includes:

- Jumpseat transom
- Coaming pads
- Cushioned bow seating
- 2 laydown seats

Fish & Ski

Fish & Ski Package includes:

- Jumpseat transom
- Coaming pads
- Conversion bow w/livewell
- Rod storage, starboard
- Laydown seat, port
- 2 swivel seats, starboard
- Trolling motor outlet

Sportfish

Sportfish package includes:

- Wide transom
- No coaming pads
- Solid front platform w/livewell
- Rod storage port & starboard
- Trolling motor outlet
- Swivel fishing chairs, (3 in 16' & 17' models; 4 in 18' to 22' models)

Steering, hydraulic	Stereo, FM/cassette tape	Stern bench, fold down (SST)	Stern ladder w/extension (alum.)	Stern ladder w/extension (stainless)	Stern rail	Stern seats	Sunlounge seats	Swim platform, teak, full	Swim platform, teak, half	Tilt wheel	Top, camper	Top, full	Top, hard	Top, sun	Trim/trolling motor panel	Trolling motor outlet	Trolling motor mounting plate	Two-position battery switch	Under-floor storage	V-berth cabin	Vinyl floor	Wheel, deluxe padded sport	Wheel, deluxe woodgrain	Wheel, stainless steel	Windshield, plexiglass, molded	Wiper, port	Wiper, starboard	Wrap around stern bench seat
S			O	S	S			O	O		O	O	O	S				O	S			O	O		O	S	O	Aluminum
O	O		O	O	S			O	O		O	O	O	S				O	S	S	S		O	O		O	S	V275 Sabre Midberth DC
S			O	S	S			O	O		O	O	O	S				O	S			O	O		O	S	O	V275 Sabre Sportfish
S	O	O		S	S			O	O		O	O	O	S				O	S			O	O		O	S	O	V245 Sabre Midberth DC
S	O	O		S	S			O	O		O	O	O	S				O	S			O	O		O	S	O	V245 & V225 Sabre Day Cruiser
O	O		O	S				O	O		O	O	O	S				O	2.)	S	S		O	O		O	S	V245, V225 & V205 Sabre GL
O	O	O		S				O	O		O	O	O	S				O	2.)	S	S		O	O		O	S	V240, V220 & V200 Sabre GL
O	O			S				O	O		O	O	O	S				O	S	S	S		O	O		O	S	V245 & V225 Sabre WAC
O	O	O		S				O	O		O	O	O	S				O	S	S	S		O	O		O	S	V240 & V220 Sabre WAC
O	O		S	S	S	O	O	O	O		O	O	O	S	P			O	S		O	O	O		O	O	2.)	V225, V205 & V195 Sabre
O	O	O		S	S			O	O		O	O	O	S	P			O	S		O	O	O		O	O		V220, V200 & V190 Sabre
O	O	O		S				O			O		O					O	S		S		O	O	S			V200 & V190 Sabre Center Console
S				S	S	S-1		O	O		S							O	S		P	O			O	S	O	V215 Vanguard Cuddy
S				S	S	S		O	O		S							O	S		P	O			O	P		V215 & V195 Vanguard
O	S			S		S		O	O		S							O	S		P	O			O	O		V190 Vanguard
O	O	O		S				O			O							O	S		S		O	O	S			V180 Phantom Center Console
O		O		S	S	S		O	O		O							O	S		O	O	O		O	O		V185 & V175 Phantom
O	O	O		S	S			O	O		O							O	S		O	O	O		O	O		V180 & V170 Phantom
O								O			O							O	S		O	O	S					V170 Maverick
O	O	O		S	S			O	O		O							O	S		O	O	O		O	O		V160 Mirage
O		O		S				O	O		O							O	S		O	O	O		O	O		V150 Mirage
O	O	O						O			O				P	O		O	^S _{V170}		O	O	O		O			V170 & V160 Viking Deluxe
																												Fiberglass
S				S	S	S		O	O		S							O	S		O	O			O	O	O	Crusader 195 & 185
O	S			S	S	S		O	O		S							O	S		O	O			O	O	O	Crusader 190 & 180
S				S	S	S		O	O		O							O			O	O			O	O	O	Crusader 165
S				S		S		O	O		O							O			O	O			O	O	O	Crusader 160
O								O			O				O	S		O			O	O	O		O		O	Crusader 170 & 160 Angler

Features	V14 Commodore	V16 Commander	V14 Fish Hawk	V16 Fish Hawk	V14 Fish Hawk Deluxe	V16 Fish Hawk Deluxe	Muskie Pro 14 W	Muskie Pro 16	Muskie Pro 16W
Aerator, auto. timer			O	O	O	O			
Bench seats - 3	S	S							
Bilge pump	O	O	S	S	S	S	O	O	O
Bow bench seat w/livewell			P	P	P	P			
Bow deck w/storage	O	O	S	S	S	S	S	S	S
Carpet, plush			S	S	S	S	S	S	S
Casting platform w/livewell			P	P	P	P	P	P	P
Console steering	O	O	O	O	O	O	O	O	O
Courtesy lights			O	O	O	O			
Drink holders	S	S							
Electronics compartment			O	O	O	O			
Fishing chair			S-2	S-2	S-2	S-2	S-2	S-2	S-2
Fishing chair armrests			O	O	O	O	O	O	O
Fishing chair base			S-2	S-2	S-2	S-2	S-2	S-2	S-2
Fuel/battery compartment	S	S	O	O	O	O	O	O	O
Fuel tank, 11 gal. underfloor			O	O	O	O			
Glove box	S	S							
Level flotation	S	S	S	S	S	S	S	S	S
Mooring cover	O	O	O	O	O	O	O	O	O
Navigation lights	O	O	S	S	S	S	S	S	S
Rope grippers	S	S	S	S	S	S	S	S	S
Rod holders			S	S	S	S	S	S	S
Rod storage compartment			P	P	P	P	S	S	S
Split seats	O	O							
Stern handles	S	S	S	S	S	S	S	S	S
Stern pan	S	S	S	S	S	S	S	S	S
Trolling motor outlet			P	P	P	P	P	P	P
Vinyl floor	S	S							
Windshield, plexiglass molded			O	O	O	O			

Features	Ensign 12	Ensign 14	Ensign 14W	Ensign 16	Ensign 16W	Ensign 18W
Anti-skid floor	S	S	S	S	S	S
Bench seats	S-3	S-3	S-3	S-3	S-3	S-4
Bow dock w/storage						O
Console steering			O	O	O	O
Deadgrass paint	O	O	O	O	O	O
Flat floor with split seats			O	O	O	O
Level flotation	S	S	S	S	S	S
Mooring cover		O	O	O	O	O
Nav. lights	O	O	O	O	O	O
Stern handles	S	S	S	S	S	S
Stern pan			O	O	S	S

Viking Deluxe

Convenience Package

- Bow bench with livewell (or stern livewell on console models)
- Rod storage, port.

Team Crestliner Package

- Casting platform w/livewell
- Rod storage, starboard
- Trolling motor outlet
- Storage/tackle trays, starboard

- "Team Crestliner" decals
- Air ride pedestals
- Electronics compartment
- Baitwell, port
- Storage compartment, port

Fish Hawk

Convenience Package

- Bow bench w/livewell
- Rod storage, port

Classic Package

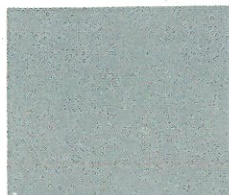
- Casting platform w/livewell
- Rod storage, port
- Trolling motor outlet
- Tackle trays

Muskie Pro

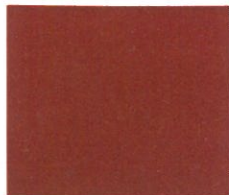
Classic Package

- Casting platform w/livewell
- Tackle trays
- Bow outlet
- Trolling motor outlet

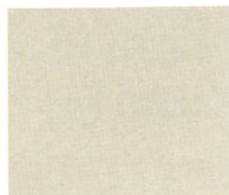
1990 Aluminum Colors



Platinum



Candy Apple Red



Pearl



Driftwood



Charcoal



Emerald Green



Midnight Blue

Single Colors:

Platinum
Pearl

Two-Tone Colors:

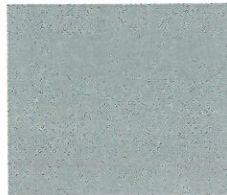
Pearl/Candy Apple Red
Pearl/Driftwood
Pearl/Emerald Green
Pearl/Midnight Blue

Platinum/Candy Apple Red
Platinum/Charcoal
Platinum/Emerald Green
Platinum/Midnight Blue

Three-Color:

(Vanguard models only)
Platinum/Candy Apple Red/Charcoal
Platinum/Emerald Green/Charcoal
Platinum/Midnight Blue/Charcoal

1990 Fiberglass Colors



Platinum



Pearl



Driftwood

Charcoal

Single Colors:

Platinum
Pearl

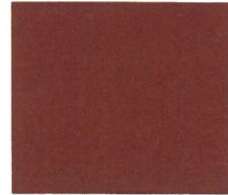
Two-Tone Colors:

Pearl/Candy Apple Red
Pearl/Driftwood
Pearl/Emerald Green
Pearl/Peacock Blue

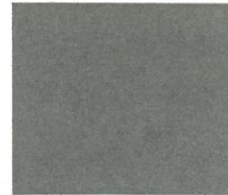
Platinum/Candy Apple Red
Platinum/Charcoal
Platinum/Emerald Green
Platinum/Peacock Blue

Three-Color:

Platinum/Candy Apple Red/Charcoal
Platinum/Emerald Green/Charcoal
Platinum/Peacock Blue/Charcoal



Candy Apple Red



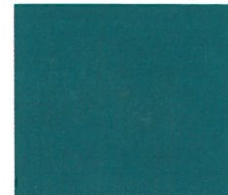
Driftwood



Charcoal



Emerald Green



Peacock Blue

1990 Aluminum and Fiberglass Boats

- New Models and Colors
- Style and selection
- Patented Innovations
- Transferable Warranties
10/20 Aluminum Structural
5 Year Fiberglass Structural
- Crestliner Quality

* Water ski equipment furnished by O'Brien

All prices and specifications subject to change. Crestliner, Inc. reserves the right to discontinue models or change prices, specifications, materials, equipment, color or design at any time without notice and without incurring obligations. Some models are shown with optional features. All boats meet specifications and standards established by the U.S. Coast Guard. Crestliner, Inc. is an active member of the National Marine Manufacturers Association and Boating Industry Association.

CRESTLINER

Crestliner, Inc. A Genmar Company
609 13th Avenue N.E. • Little Falls, MN 56345 • (612)632-6686
FAX (612)632-2127

Nordican Boat Company, Inc.
130 W. Gore St. • Thunder Bay, Ontario P7E 3V9 • (807)475-4244

Sold and Serviced By: