

***CRESTLINER***  
**2025 PRODUCT GUIDE**



# BORN FOR THE WATER

The call of the water is irresistible. From the moment you load in your tackle and throw off the dock line to the moment you glide back into the slip at sunset with a boat full of memories, nothing else matters. Everything important comes into focus out here, while the worry of the everyday world fades away. Casting a line and catching a fish, cruising the scenic shoreline, or just relaxing in a secluded cove—anything is possible where the land ends and the water begins. This is where we belong. Join us.

**18** CONSECUTIVE CSI AWARDS



## LIMITED LIFETIME WARRANTY

Protect every purchase with a limited lifetime warranty on mainseam welds, a three-year bow-to-stern warranty on virtually everything else and the ability to transfer warranties to future owners. (See warranty for details. Warranty differs on CR Jon boats.)

## CONTENTS

- 04** Deep-V
- 06** Fish Hawk
- 08** Hawk
- 10** Kodiak
- 12** Pro Tiller & Discovery Tiller
- 14** Super Hawk
- 16** Sportfish
- 18** Authority
- 19** Commander & Commander Elite
- 20** Mod-V
- 21** MX
- 22** XF & XFC
- 24** Storm
- 25** Ridge
- 26** Bay
- 27** Retriever CC/SC
- 28** Retriever Jon & Jon DLX
- 29** CR Jon & Outreach
- 30** Colors
- 31** SureMount Accessories

# FORGED WITH STRENGTH. DEFINED BY DURABILITY.



The heart of every Crestliner boat is built with premium materials by skilled craftsmen to deliver durable, long-lasting performance that carries your family from one season to the next with peace of mind.

## 1 LEGENDARY FOUR X HULL

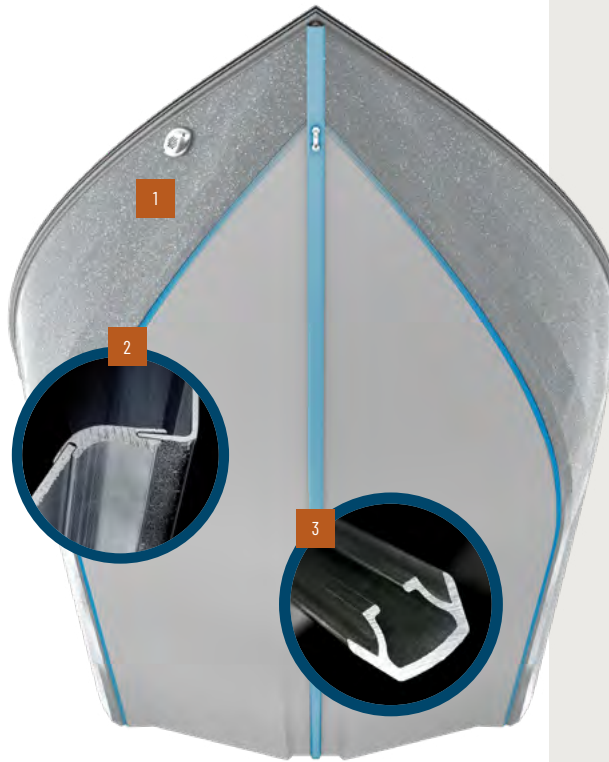
Four sheets of premium-grade aluminum and a meticulous welding process create our legendary one-piece Four X Hull. The smooth, flawless design slices through water and big waves with minimal drag.

## 2 INTERLOCKING TONGUE-AND-GROOVE CONSTRUCTION

A unique interlocking tongue-and-groove construction and an advanced continuous-seam welding process create a one-piece bonded Hull for unmatched strength and durability.

## 3 EXTRUDED FULL-LENGTH KEEL

A thick extruded full-length keel from bow to stern withstands punishment and provides maximum strength, durability and control at any speed.



## SUPERIOR STRUCTURAL INTEGRITY

An intricate stringer foundation supports every inch of the boat, ensuring a safe, smooth ride.



## DOUBLE-WELDED COMPOSITE TRANSOM

The transom of a boat is subject to tremendous force and needs to harness powerful engine torque. That's why our transoms feature a double-welded design inside and out and wood-free composite construction.

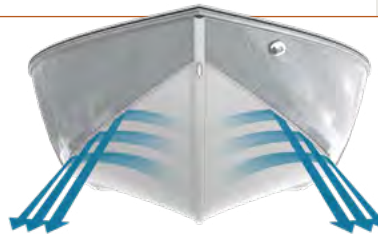
## WORK-HARDENED SIDEWALLS

Adds strength and rigidity



## REVERSE CHINE DESIGN

Forces water down for a drier ride



## VARIABLE-DEGREE DEADRISE

Allows for quick planing and unmatched stability



# DEEP-V



## READY FOR ANYTHING

Dominating big water fisheries. Thrilling the kids with a day of tow sports. Lounging in the sun on a summer afternoon. There's nothing our versatile and capable Deep-V family of boats can't do. With dry-riding all-welded hulls; deep, safe and comfortable cockpits; and the fishing and recreational features to please anyone in the family, these versatile boats let you live the good life and make lasting memories on the water.



# THE LATEST IN DEEP-V HULL INNOVATION.

Our revolutionary Active Performance (AP-X) Hull delivers instant lift, enhanced driving responsiveness, accelerated holeshots and exceptional control. And it's unlike anything you've experienced before.

## 1 HIGH-PERFORMANCE HANDLING

The AP-X Hull's dual tracking edges deliver maximum control while cornering and improved tracking while trolling.



## 2 GRAB THE HOLESHOT

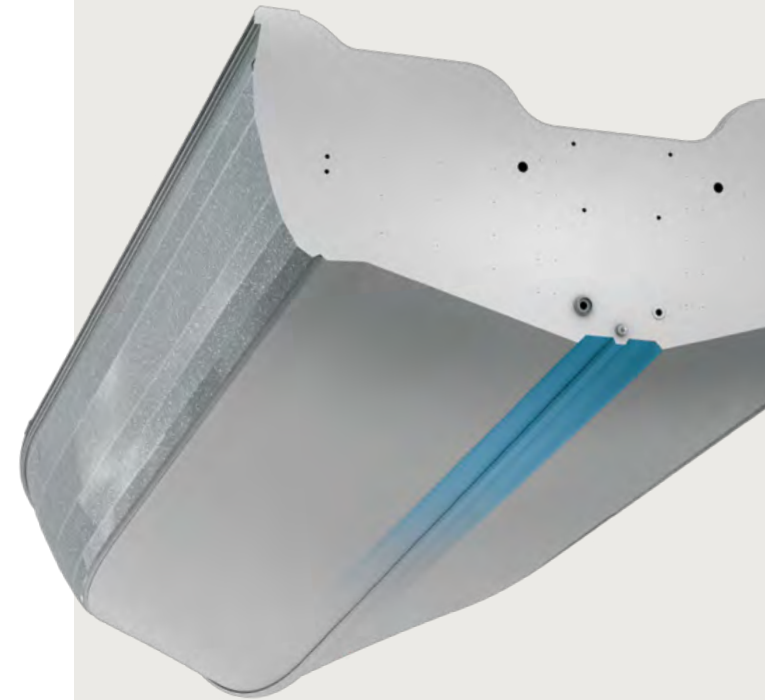
Engineered with a recessed pad design for instant lift and an accelerated holeshot, the AP-X Hull gives you incredible speed and control.

## 3 MAXIMIZE ENGINE PERFORMANCE

The breakthrough AP-X Hull design channels water so the prop is fed a continuous flow of undisturbed water for maximum engine performance.

## 4 A CRESTLINER-EXCLUSIVE DESIGN

The AP-X Hull is available exclusively on limited models: 1950 and 1850 Sportfish, 1850 and 1750 Super Hawk, and 1850 and 1750 Fish Hawk.



## PROVEN TECHNOLOGY

Crestliner's Active Performance AP-X Hull has won a Boating Industry Top Product award, which recognizes "the marine industry's best new and innovative products."



# FISH HAWK



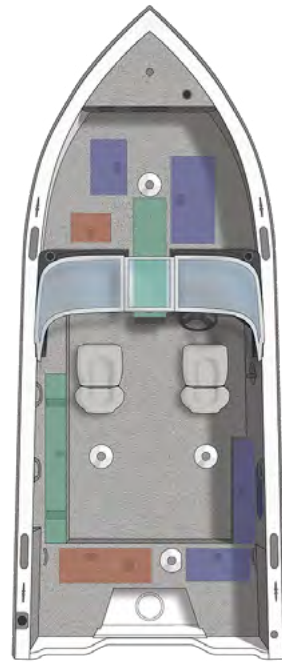
## A LEGENDARY BOAT FOR LEGENDARY ANGLERS

No fish can hide from the magnificent synthesis of your angling skills and the prowess of the Fish Hawk. The premium performance of the advanced AP-X hull plus industry-leading fishing-focused features make this the serious angler's boat of choice no matter what species you target. For hard-core fish stories that amaze and family memories that endure, nothing can compare to the Fish Hawk.



- 1 AP-X Hull with Recessed Pad
- 2 Angler-Inspired Console Design
- 3 High-Capacity Center Rod Locker
- 4 Tournament-Style Fishing Seats
- 5 Dual Aft Jump Seats
- 6 Available in Side Console and Walk-Through

**NEW**  
FOR 2025



**SPECIFICATIONS**

	<b>1950 FISH HAWK</b>	<b>NEW 1850 FISH HAWK</b>	<b>NEW 1750 FISH HAWK</b>
Overall Length	19' 6" (5.94 m)	18' 7" (5.66 m)	17' 7" (5.36 m)
Beam	101" (257 cm)	96" (244 cm)	95" (241 cm)
Transom Height	25" (64 cm)	25" (64 cm)	25" (64 cm)
Deadrise	17°	15°	15°
Weight (Boat+Max Engine, Dry)	2,261# (1,026 kg)	2,101# (953 kg) SC 2,194# (973 kg) WT	1,998# (906 kg) SC 2,081# (944 kg) WT
Max Capacity (Weight/Person)	2,100# (953 kg) / 7	1,810# (821 kg) / 6	1,710# (776 kg) / 6
Max HP Capacity	225 HP	200 HP	150 HP
Aerated Livewell Capacity (Bow / Stern)	9 gal (34 L) / 17 gal (64 L)	12 gal(45L) / 28 gal (106L)	12 gal(45L) / 28 gal (106L)
Fuel Capacity	50 gal (189 L)	32 gal (121 L)	27 gal (102 L)

**EXPLORE NOW**

**EXPLORE NOW**

**EXPLORE NOW**



1950 only available in walkthrough

# HAWK



## BORN FOR THE WATER

The perfect entry point into the Hawk Family, the Hawk is built on our legendary all-welded hull, with fishing and family features that will fill every day on the water with incredible memories. With standard jump seats, massive tackle and gear storage, and a deep, secure cockpit, the Hawk will keep smiles on faces and fish in livewells for years to come.



1 Stern Livewell

2 Center Rod Storage Locker

3 Jump Seats Standard

4 Angler-Inspired Console Design





## SPECIFICATIONS

Overall Length	17' 6" (5.33 m)	16' 9" (5.11 m)
Beam	88" (26.82 m)	86.5" (220 m)
Transom Height	25" (64 cm)	25" (51 cm)
Deadrise	12°	12°
Weight (Boat+Max Engine, Dry)	1,522# (690 kg) SC 1,659# (752 kg) WT	1,413# (741 kg) SC 1,548# (702 kg) WT
Max Capacity (Weight/Person)	1,600# (725.75 kg) / 6	1,450# (658 kg) / 6
Max HP Capacity	115 HP	90 HP
Aerated Livewell Capacity	15 gal (56.78 L)	15 gal (56.78 L)
Fuel Capacity	20 gal (75.71 L)	19 gal (72 L)

### 1750 HAWK

### 1650 HAWK



[EXPLORE NOW](#)

[EXPLORE NOW](#)

# KODIAK



## MORE THAN JUST A BOAT

Bells? No thanks. Whistles? Keep 'em. There's no need for fancy frills and flashing lights here. Kodiak is a down to earth, tough as heck boat that will do what it has to do to make your adventure a success, no matter how hard you push it. From Canadian resorts to Midwest fish camp and from the mountain lakes of the west to the massive reservoirs of the south, this is the boat that can do it all.



- 1 All-Welded Deep-V Hull
- 2 Storage and Livewell
- 3 Angler-Inspired Console Design
- 4 Folding Conversion Bench (Optional)
- 4 Comfortable, Durable Seating
- 4 Tiller, Side Console, or Walk-Through Configurations

**NEW**  
FOR 2025



**SPECIFICATIONS**

<b>Overall Length</b>	18' (5.48 m)	16' 4" (4.98 m)	16' 4" (4.98 m)	16' 4" (4.98 m)
<b>Beam</b>	78" (198 cm)	81" (206 cm)	81" (206 cm)	81" (206 cm)
<b>Transom Height</b>	20" (51 cm)	20" (51cm)	20" (51cm)	20" (51cm)
<b>Deadrise</b>	10°	10°	10°	10°
<b>Weight (Boat+Max Engine, Dry)</b>	1,080# (500 kg)	1,195# (542 kg)	1,195# (542 kg)	1,162# (52 kg)
<b>Max Capacity (Weight/Person)</b>	1,375# (624 kg) / 6	1,300# (590 kg) / 5	1,300# (590 kg) / 5	1,300# (590 kg) / 5
<b>Max HP Capacity</b>	60 HP	60 HP	60 HP	60 HP
<b>Aerated Livewell Capacity (Bow)</b>	22 gal. (49L)	17 gal (35L)	17 gal (35L)	17 gal (35L)
<b>Fuel Capacity</b>	19 gal (72 L)	12 gal (45 L) portable*	12 gal (45 L) portable*	12 gal (45 L) portable*

\*Portable fuel tank



**1800 KODIAK TILLER**

[EXPLORE NOW](#)

**1650 KODIAK SC**

[EXPLORE NOW](#)

**1650 KODIAK WT**

[EXPLORE NOW](#)

**1650 KODIAK TILLER**

[EXPLORE NOW](#)

# PRO TILLER & DISCOVERY TILLER

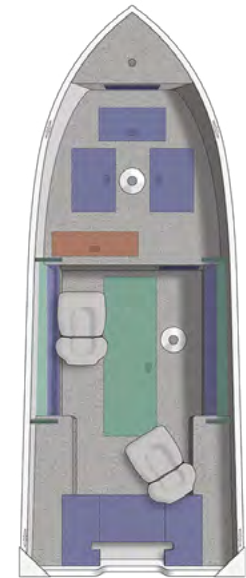


## CONTROL THAT NEVER COMPROMISES

The tried-and-true Pro Tiller is designed with the most important part of the boat in mind: the driver. From the tiller handle to the command console to the livewell, everything is within reach and under your control. So whether you're trolling a weedline or scanning the graph, you'll be ready for anything.



- 1 Command Console
- 2 Bow Storage
- 3 Aerated Stern Livewell & Baitwell
- 4 High Capacity Center Rod Locker



## SPECIFICATIONS

	1850 PRO TILLER	1750 PRO TILLER	1650 PRO TILLER	1650 DISCOVERY TILLER
Overall Length	18' 6" (5.64 m)	17' 6" (5.33 m)	16' 10" (5.13 m)	16' 6" (5.03 m)
Beam	94" (239 cm)	94" (239 cm)	86.5" (220 cm)	75.5" (192 cm)
Transom Height	25" (64 cm)	25" (64 cm)	20" (51 cm)	20" (51 cm)
Deadrise	12°	12°	12°	6°
Weight (Boat+Max Engine, Dry)	1,734# (787 kg)	1,634# (741 kg)	1,444# (655 kg)	1,095# (497 kg)
Max Capacity (Weight/Person)	1,650# (748 kg) / 6	1,600# (726 kg) / 6	1,350# (612 kg) / 6	1,250# (567 kg) / 5
Max HP Capacity	90 HP	90 HP	75 HP	60 HP
Aerated Livewell Capacity (Bow / Stern)	12 gal (45 L) / 15 gal (57 L)	12 gal (45 L) / 15 gal (57 L)	15 gal (57 L)	11 gal (42 L)
Fuel Capacity	32 gal (121 L)	27 gal (102 L)	20 gal (76 L)	Portable



EXPLORE NOW

EXPLORE NOW

EXPLORE NOW

EXPLORE NOW

# SUPER HAWK



## VERSATILITY IS BUILT IN

The redesigned Super Hawk gives you and your family plenty of ways to experience life on the water. Push its spectacular fishing features to the limits in the morning, take the kids tubing and skiing in the afternoon, and end the day with a relaxed sunset cruise. No matter how you boat, the Super Hawk was born to do it all. And when you're working to please everyone in the family with the same rig, there's no better, more affordable choice.



1 Premium Console Design

2 Conversion Bow  
(Bow Pad Optional)

3 Jump Seats

4 Stern Platform Pad



## SPECIFICATIONS

<b>Overall Length</b>	19' 9" (6.02 m)	18' 9" (5.72 m)	17' 9" (5.41 m)
<b>Beam</b>	98" (249 cm)	96" (244 cm)	94" (239 cm)
<b>Transom Height</b>	25" (64 cm)	25" (64 cm)	25" (64 cm)
<b>Deadrise</b>	18°	15°	15°
<b>Weight (Boat+Max Engine, Dry)</b>	2,347# (1,065 kg)	2,161# (980 kg)	1,925# (873 kg)
<b>Max Capacity (Weight/Person)</b>	2,000# (907kg) / 9	1,800# (8161 kg) / 8	1,700# (770 kg) / 7
<b>Max HP Capacity</b>	225 HP	200 HP	175 HP
<b>Aerated Livewell Capacity (Bow / Stern)</b>	10 gal (38 L) / 17 gal (64 L)	10 gal (38 L) / 13 gal (49L)	10 gal (38 L) / 13 gal (49L)
<b>Fuel Capacity</b>	40 gal (151 L)	32 gal (121 L)	28 gal (106 L)

### 1950 SUPER HAWK

[EXPLORE NOW](#)

### 1850 SUPER HAWK

[EXPLORE NOW](#)

### 1750 SUPER HAWK

[EXPLORE NOW](#)



# SPORTFISH



## FISH AND PLAY THE DAY AWAY

Our flagship Deep-V Sportfish is packed with the most innovative, high-performance recreation and fishing features—putting it at the top of our lineup and the top of your wish list. So whether it becomes your family's main hangout or your go-to fishing partner, one thing is sure: you'll be ready for anything.



1 Premium Console Design

2 Conversion Bow

3 Swim Platform with Ladder

4 Stern Bench (1950 shown)





## SPECIFICATIONS

	2250 SPORTFISH	2050 SPORTFISH	1950 SPORTFISH	1850 SPORTFISH
Overall Length	22' 11" (6.99 m)	20' 10" (6.35m)	19' 11" (6.07 m)	18' 11" (5.77 m)
Beam	102" (259 cm)	98" (249 cm)	96" (244 cm)	96" (244 cm)
Transom Height	25" (64 cm)	25" (64 cm)	25" (64 cm)	25" (64 cm)
Deadrise	17°	17°	16°	16°
Weight (Boat+Max Engine, Dry)	3,083# (1,398 kg)	2,593# (1,176 kg)	2,261# (1,026 kg)	2,211# (1,003 kg)
Max Capacity (Weight/Person)	2,400# (1,089 kg) / 10	2,100# (953 kg) / 9	1,850# (839 kg) / 8	1,850# (839 kg) / 8
Max HP Capacity	400 HP	225 HP	200 HP	200 HP
Aerated Livewell Capacity (Bow / Stern)	14 gal (53 L) / 19 gal (72 L)	14 gal (53 L) / 14 gal (53 L)	14gal (53 L) / 28 gal (106 L)	14 gal (53 L) / 28 gal (106 L)
Fuel Capacity	54 gal (204 L)	40 gal (151 L)	32 gal (121 L)	32 gal (121 L)



EXPLORE NOW

EXPLORE NOW

EXPLORE NOW

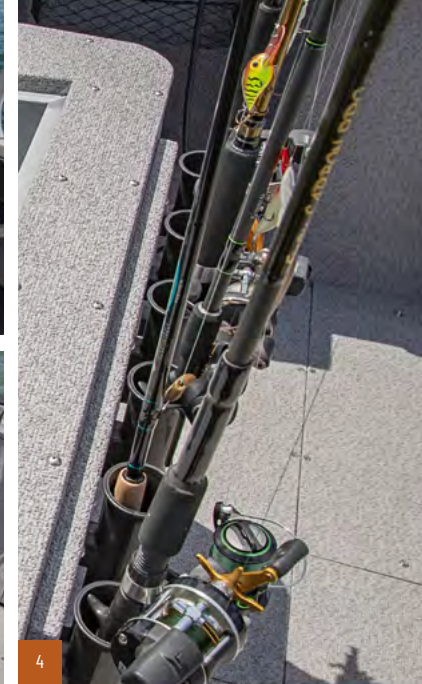
EXPLORE NOW

# AUTHORITY



## BIG WATER BOSS

If you need a boat as fearless as you, look no further than Authority big-water fishing boats. Whether you're facing nasty chop or bad weather, the open layouts and wide, stable decks keep you in charge no matter the challenge. Onboard an Authority, you'll never lack protection—or confidence—in any situation.



- 1 Premium Console Design
- 2 Starboard Storage
- 3 Bow & Stern Livewells
- 4 Vertical Rod Holders

### SPECIFICATIONS

	2250 AUTHORITY	2050 AUTHORITY
Overall Length	22' 11" (6.99 m)	20' 10" (6.35 m)
Beam	102" (259 cm)	98" (249 cm)
Transom Height	25" (64 cm)	25" (64 cm)
Deadrise	17°	17°
Weight (Boat+Max Engine, Dry)	2,870# (1,302 kg)	2,536# (1,150 kg)
Max Capacity (Weight/Person)	2,400# (1,089 kg) / 10	2,100# (953 kg) / 9
Max HP Capacity	400 HP	225 HP
Aerated Livewell Capacity (Bow / Stern)	15 gal (57 L) / 20 gal (76 L)	15 gal (57 L) / 20 gal (76 L)
Fuel Capacity	54 gal (204 L)	40 gal (151 L)



2250 Authority



2050 Authority



[EXPLORE NOW](#)

[EXPLORE NOW](#)

# COMMANDER & COMMANDER ELITE



## TAKE COMMAND OF THE WATER

The tougher the fishing, the harder Commander fishes. They're built tough for rough water and the most demanding fishing tasks imaginable. With ultra-durable, chop-crushing hulls and advanced fishing features for trolling, casting, and more, the Commander and Commander Elite bring everything you need.



1



2



4



3

- 1 Diamond Plate Bow
- 2 Ultra-Tough Cockpit Features
- 3 All-Aluminum Console
- 4 Bench Seat with Storage Compartment (Option)

### SPECIFICATIONS

	2050 COMMANDER	1850 COMMANDER	2050 COMMANDER ELITE	1850 COMMANDER ELITE
Overall Length	20' 8" (6.30 m)	18' 8" (5.64 m)	21' 7" (6.58 m) w/ SST 20' 8" (6.30 m)	19' 7" (5.97 m) w/ SST 18' 9" (5.72 m)
Beam	94" (239 cm)	94" (239 cm)	94" (239 cm)	94" (239 cm)
Transom Height	25" (64 cm)	25" (64 cm)	25" (64 cm)	25" (64 cm)
Deadrise	17°	17°	17°	17°
Weight (Boat+Max Engine, Dry)	2,226# (1,010 kg)	2,021# (917 kg)	2,311# (1,048 kg)	2,076# (942 kg)
Max Capacity (Weight/Person)	2,200# (998 kg) / 8	2,101# (953 kg) / 6	2,200# (998 kg) / 8	1,900# (862 kg) / 6
Max HP Capacity	200 HP	150 HP	200 HP	150 HP
Aerated Livewell Capacity	18 gal (68 L)	18 gal (68 L)	22 gal (83 L)	22 gal (83 L)
Fuel Capacity	40 gal (151 L)	33 gal (125 L)	40 gal (151 L)	33 gal (125 L)



Commander Elite



Commander



EXPLORE NOW

EXPLORE NOW

EXPLORE NOW

EXPLORE NOW

# MOD-V

## FROM WEEKEND WARRIOR TO TOURNEY PRO

With hulls optimized for fast planing, higher speed and shallow drafts, our Mod-V boats are ideal for both tournament competition and everyday fishing. Fishing-first layouts and thoughtful tackle and rod storage keep you on the water when the bite is hot, and precision, all-welded construction ensures a lifetime of high-level performance. Whether you're racing back to the weigh-in or just casting a line in a shady cove, these are the boats that get the bite.

# MX



## TOURNAMENT-TESTED TOUGHNESS

The same hours you've poured into fine-tuning your bass game are the same hours we poured into engineering the MX 21 and MX 19. This fishing boat family is spacious. Functional. Tough. It gives you 150-250 horsepower and top-level performance with a lightning-fast pad hull—because you won't settle for less.



- 1 Massive Bow Casting Deck
- 2 Ample Bow Storage
- 3 Premium Fiberglass Console
- 4 Spacious Stern Deck and Livewell

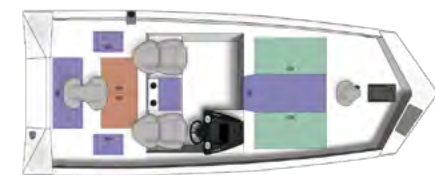
### SPECIFICATIONS

	MX 21	MX 19
Overall Length	21' 5" (6.53 m)	19' 5" (5.92m)
Beam	97" (246 cm)	97" (246 cm)
Transom Height	20" (51 cm)	20" (51 cm)
Deadrise	10°	10°
Weight (Boat+Max Engine, Dry)	2,523# (1,144 kg)	2,345# (1,064 kg)
Max Capacity (Weight/Person)	1,797# (618 kg) / 4	1,797# (815 kg) / 4
Max HP Capacity	250 HP	200 HP
Aerated Livewell Capacity	45 gal (170 L)	45 gal (170 L)
Fuel Capacity	40 gal (151 L)	40 gal (151 L)

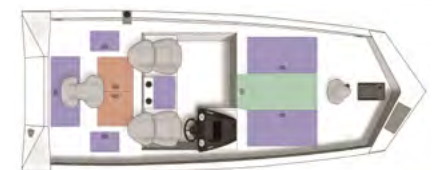


[EXPLORE NOW](#)

[EXPLORE NOW](#)



MX 21



MX 19

# XF & XFC



## DON'T GO FISHING. GO CATCHING.

The newly redesigned XF Series multi-species fishing boats are built to catch with huge decks, cavernous storage, and rock-solid construction. These feature-rich, comfortable, and highly fishable boats give you everything to pursue the fish of your dreams, no matter where or how you like to fish.



1 Wide Casting Deck

2 23-Gallon Stern Livewell

3 Center Rod Locker (XF 189)

4 Fiberglass Console



## SPECIFICATIONS

	<b>XF 189</b>	<b>XF 179</b>	<b>XFC 189</b>	<b>XFC 179</b>
<b>Overall Length</b>	18' 10" (5.74 m)	17' 8" (5.38 m)	18' 10" (5.74 m)	17' 8" (5.38m)
<b>Beam</b>	90" (229 cm)	90" (229 cm)	90" (229 cm)	90" (229 cm)
<b>Transom Height</b>	20" (51 cm)	20" (51 cm)	20" (51 cm)	20" (51 cm)
<b>Deadrise</b>	10°	10°	10°	10°
<b>Weight (Boat+Max Engine, Dry)</b>	1,736# (787 kg)	1,549# (703 kg)	1,786# (810 kg)	1,599# (725 kg)
<b>Max Capacity (Weight/Person)</b>	1,279# (580 kg) / 4	1,178# (555 kg) / 4	1,279# (580 kg) / 4	1,178# (534 kg) / 4
<b>Max HP Capacity</b>	115/150** HP	90 HP	115/150** HP	90 HP
<b>Aerated Livewell Capacity</b>	23 gal (87 L)	23 gal (87 L)	23 gal (87L) / 23 gal (87L)	23 gal (87L) / 23 gal (87L)
<b>Fuel Capacity</b>	21 gal (79.5L)	21 gal (79.5 L)	21 gal (79.5 L)	21 gal (79.5 L)



[EXPLORE NOW](#)

[EXPLORE NOW](#)

[EXPLORE NOW](#)

[EXPLORE NOW](#)

# STORM



## READY FOR ANYTHING

The versatile Storm Mod-V fishing boat is ready to seek any species, from panfish to crappie, bass to walleye, and pike to musky. Affordable and built for a lifetime of multi-species fishing, these Mod-V performers top the list for first-time boat buyers.



- 1 Port Rod Storage
- 2 Bow Livewell
- 3 Fiberglass Console

### SPECIFICATIONS

	1700	1600
Overall Length	17' (5.18 m)	16' (4.88 m)
Beam	75" (191 cm)	75" (191 cm)
Transom Height	20" (51 cm)	20" (51 cm)
Deadrise	8°	8°
Weight (Boat+Max Engine, Dry)	930# (422 kg)	857# (389 kg)
Max Capacity (Weight/Person)	1,101# (499 kg) / 4	936# (424 kg) / 3
Max HP Capacity	60 HP	50 HP
Aerated Livewell Capacity	17 gal (64 L)	17 gal (64 L)
Fuel Capacity	12 gal (45 L)*	6 gal (23 L)*



\*Portable fuel tank

[EXPLORE NOW](#)

[EXPLORE NOW](#)



1700 Storm



1600 Storm



# RIDGE



## GETS YOU TO THE FISH

The Ridge drafts shallow and moves quick, getting you to the fish no matter where they hide. A nimble Mod-V hull and clever interior fishing features make this the perfect mid-level bass fishing boat, and affordable pricing plus built-in versatility mean you can get to the fish and start catching.

### SPECIFICATIONS

Overall Length	16' 11" (5.16m)
Beam	85" (216 cm)
Transom Height	20" (51 cm)
Deadrise	3.5°
Weight (Boat+Max Engine, Dry)	1,344# (610 kg)
Max Capacity (Weight/Person)	1,128# (512 kg) / 4
Max HP Capacity	75 HP
Aerated Livewell Capacity	16 gal (60 L)
Fuel Capacity	21 gal (79.5 L)

### 1700 RIDGE

[EXPLORE NOW](#)



1



2



3



4

- 1 Stern Livewell
- 2 Feature Rich Console
- 3 Port Rod Storage
- 4 Large Bow Casting Deck



1700 Ridge



# BAY



## CONQUER THE INSHORE WORLD

There's nothing like inshore fishing for incredible action, and the Bay series brings everything you want to land reds, specks and any other species. A fast Mod-V hull, saltwater-specific fishing features and plenty of power will keep you catching in the bay all day.



1



2



3

1 Jump Seats with Storage Below

2 Full Bow Casting Deck with Storage

3 Fiberglass Console with Rod Holders and Cooler

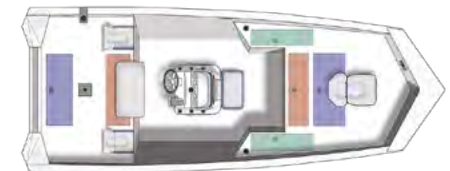
### SPECIFICATIONS

	2000	1800
Overall Length	20' 5" (6.22 m)	18' 6" (5.64 m)
Beam	96" (244 cm)	96" (244 cm)
Transom Height	20" (51 cm)	22" (56 cm)
Deadrise	12°	12°
Weight (Boat+Max Engine, Dry)	2,066# (937 kg)	1,672# (758 kg)
Max Capacity (Weight/Person)	1,508# (684 kg) / 6	1,262# (572 kg) / 4
Max HP Capacity	150 HP	150 HP
Aerated Livewell Capacity	18 gal (68 L) / 21 gal (79 L)	21 gal (79 L)
Fuel Capacity	32 gal (121 L)	21 gal (79.5 L)

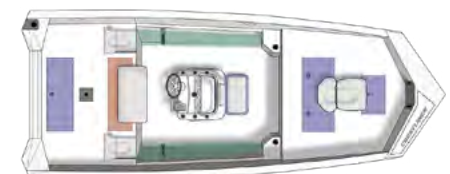


[EXPLORE NOW](#)

[EXPLORE NOW](#)



2000



1800

# RETRIEVER CC/SC



## WEATHER EVERY SEASON WITH STRENGTH

For the hunter or angler who needs a boat that can keep up from one season to the next, the unshakable Retriever CC (Center Console) and SC (Side Console) deliver dependable performance for every outing.



1 SC Side Console

2 RCC Livewell and Console

3 FCC Center Console

4 SCHED Livewell



CC



SC



FCC

SPECIFICATIONS	2070 CC/SC	2070 SCHED	1860 CC/SC	1860 RCC	1760 SC	1660 SC	1870 FCC	1660 FCC
Overall Length	20' (6.09 m)	20' (6.09 m)	18' (5.49 m)	18' (5.49 m)	17' (5.18 m)	16' (4.88 m)	18' (5.45m)	16' (4.88 m)
Beam	96" (244 cm)	96" (244 cm)	85" (216 cm)	85" (216 cm)	85" (216 cm)	74" (188 cm)	96" (244 cm)	85" (216 cm)
Transom Height	20" (51 cm)	20" (51 cm)	20" (51 cm)	20" (51 cm)	20" (51 cm)	20" (51 cm)	27" (69 cm)	22" (56 cm)
Deadrise	3.5°	3.5°	3.5°	3.5°	3.5°	3.5°	3.5°	3.5°
Weight (Boat+Max Engine, Dry)	1,581# (717 kg)	1,745 # (791 kg)	1,329# (603 kg)	1,045# (474 kg)	1,249# (567 kg)	1,087# (493 kg)	1348# (611 kg)	1,213# (550 kg)
Max Capacity (Weight/Person)	1,862# (845 kg) / 7	1,862# (845 kg) / 7	1,578# (716 kg) / 7	1,578# (716 kg) / 6	1,260# (572 kg) / 5	1,001# (454 kg) / 4	1623# (736 kg)	1128# (512 kg)
Max HP Capacity	150 HP	150 HP	90 HP	60 HP	75 HP	60 HP	80 HP	65 HP
Aerated Livewell Capacity	16 gal (60 L)	16 gal (60 L)	16 gal (60 L)	16 gal (60 L)	16 gal (60 L)	16 gal (60 L)	17 gal (64 L)	13 gal (49)
Fuel Capacity	19 gal (72 L)	19 gal (72 L)	19 gal (72 L)	Portable	19 gal (72 L)	Portable	19 gal (72 L)	Portable



EXPLORE NOW

EXPLORE NOW

EXPLORE NOW

EXPLORE NOW

EXPLORE NOW

EXPLORE NOW

EXPLORE NOW

EXPLORE NOW

1860 also available in tunnel jet hull

# RETRIEVER JON & JON DELUXE



1860 Deluxe

- 1 Deluxe Stern Bench with Optional Seat & Clip
- 2 Deluxe Bow with Storage and 16-Gallon Livewell
- 3 Quick Access Rod Rack

## BUILT TOUGH

With multiple layouts for any on-the-water application you can imagine, the Retriever Jon and Jon DLX series' let you fish, hunt or work where you want, the way you want.

### SPECIFICATIONS

	2070	1860	1760	1660	1546	1860 DLX	1760 DLX	1660 DLX
Overall Length	20' (6.10 m)	18' (5.49 m)	17' (5.18 m)	16' (4.88 m)	15' 1" (4.59 m)	18' (5.49 m)	16' 10" (5.13 m)	16' (4.87 m)
Beam	96" (244 cm)	85" (216 cm)	80" (203 cm)	80" (203 cm)	70" (178 cm)	85" (216 cm)	85" (216 cm)	85" (216 cm)
Transom Height	20" (51 cm)	20" (51 cm)	20" (51 cm)	20" (51 cm)	20" (51 cm)	20" (51 cm)	20" (51 cm)	20" (51 cm)
Deadrise	3.5°	3.5°	3.5°	3.5°	3.5°	3.5°	3.5°	3.5°
Weight (Boat+Max Engine, Dry)	1,069# (485 kg)	961# (436 kg)	937# (425 kg)	921# (418 kg)	467# (212 kg)	723# (328 kg)	670# (304 kg)	670# (304 kg)
Max Capacity (Weight/Person)	1,900# (862 kg) / 7	1,600# (726 kg) / 6	1,151# (522kg) / 5	1,041# (472 kg) / 4	825# (374 kg) / 4	1,659# (753 kg) / 6	1,051# (477 kg) / 5	1,051# (477 kg) / 4
Max HP Capacity	75 HP	60 HP	50 HP	40 HP	25 HP	75 HP	50 HP	50 HP
Aerated Livewell Capacity	Optional	Optional	Optional	Optional	Optional	16 gal (60 L)	16 gal (60 L)	16 gal (60 L)
Fuel Capacity	Portable	Portable	Portable	Portable	Portable	Portable	Portable	Portable



EXPLORE NOW

EXPLORE NOW

EXPLORE NOW

EXPLORE NOW

EXPLORE NOW

EXPLORE NOW

EXPLORE NOW

EXPLORE NOW

# CR JON



## GO ANYWHERE WITH CONFIDENCE

When you're laser-focused on getting where you need to go to get the job done, the CR Jon is exactly what you need, bringing affordable performance to any adventure.



1040 Jon

### FEATURES

- Oar Lock Sockets
- Transom Handles
- Formed-In Spray Rails

# OUTREACH



## ADVENTURE FOR EVERYONE

The Outreach is a dependable, utility boat—plain and simple. Built to last, these easy-to-own Deep-V hull aluminum boats offer a great time on the water at a reasonable price.



1672 Outreach

### FEATURES

- Bench Seats
- Transom Handles

### SPECIFICATIONS

	1852MT	1648/M	1448	1436L	1240	1040	1032	1672 OUTREACH	1469 OUTREACH
Overall Length	18' (5.48 m)	15' (4.82 m)	14' (4.27 m)	14' (4.27 m)	11' 9" (3.58 m)	10' (3.04 m)	10' (3.04 m)	16' 2" (4.93 m)	14' 6" (4.42 m)
Beam	75" (191 cm)	70" (178 cm)	70" (178 cm)	57" (145 cm)	56" (142 cm)	56" (142 cm)	48" (122 cm)	72" (183 cm)	69" (175 cm)
Transom Height	20" (51 cm)	15" (38 cm) 1648/M 20" (51 cm) MT cm)	15" (38 cm) 1448/M 20" (51 cm) MT	15" (38 cm)	15" (38 cm)	15" (38 cm)	15" (38 cm)	20" (51 cm)	20" (51 cm)
Weight (Boat Only, Dry)	475# (215 kg)	275# (125 kg)	260# (118 kg)	145# (66 kg)	107# (49 kg)	87# (40 kg)	80# (36 kg)	325# (147 kg)	285# (129 kg)
Max Capacity (Weight/Person)	1,375# (624 kg) / 6	1,014# (460 kg) / 4 1648 973# (442 kg) / 4 M/MT	825# (374 kg) / 4	560# (254 kg) / 3	535# (243 kg) / 3	419# (190 kg) / 3	275# (125 kg) / 2	829# (376 kg) / 5	836# (379 kg) / 4
Max HP Capacity	40 HP	35 HP	25 HP	15 HP	10 HP	5 HP	3 HP	25 HP	25 HP



EXPLORE NOW

EXPLORE NOW

EXPLORE NOW

EXPLORE NOW

EXPLORE NOW

EXPLORE NOW

EXPLORE NOW

EXPLORE NOW

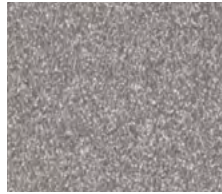
EXPLORE NOW

# DEEP-V COLORS

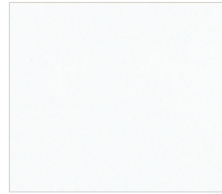
## PAINT OPTIONS



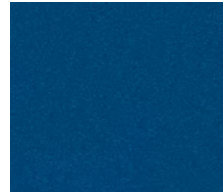
Black Metallic



Silver Metallic



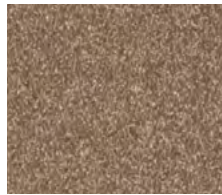
Bright White



True Blue Metallic



Fire Red Metallic



Canyon Brown Metallic

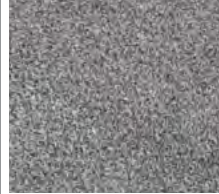


Gunmetal Gray



Clear Coat  
(Shown on Black Metallic paint.  
Available on select models with  
one-color exterior paint.)

## CARPET SWATCHES



Gray Carpet



Tan Carpet

## VINYL FLOORING



Gray Vinyl



Tan Vinyl

## VINYL SEATING



Gray Vinyl



Tan Vinyl

# MOD-V COLORS

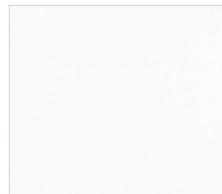
## PAINT OPTIONS



Black Metallic



Silver Metallic



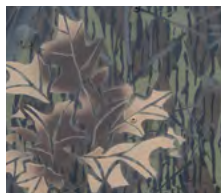
Bright White



True Blue Metallic



Fire Red Metallic



Mossy Oak® Breakup®  
(Interior/Exterior)



Mossy Oak® Shadow Grass  
Blades® (Interior/Exterior)



Gunmetal Gray



Marsh Tan  
(Interior/Exterior)

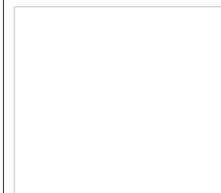


Olive Drab  
(Interior/Exterior)

## INTERIOR



SeaDek Flooring (Bay only)



White Crest-Liner Interior  
Coating



Crest-Liner Interior Coating



Matte Gray Crest-Liner  
Interior Coating

## CARPET SWATCHES



Gray Carpet

# DEEP-V SUREMOUNT GUNNEL ACCESSORIES



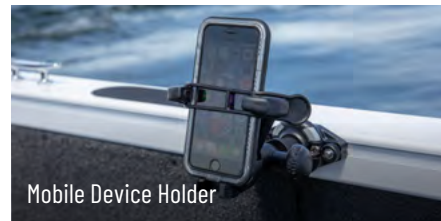
Removable SureMount aluminum accessory brackets and mounts let you slide your favorite accessories along the gunnel for perfect placement without drilling.



Accessory Bracket



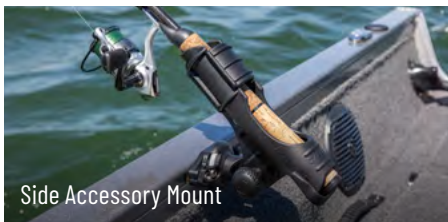
Top Accessory Mount



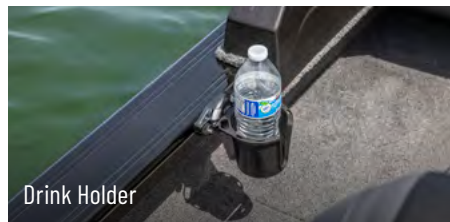
Mobile Device Holder



Accessory & Drink Holder



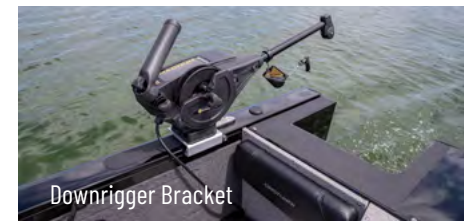
Side Accessory Mount



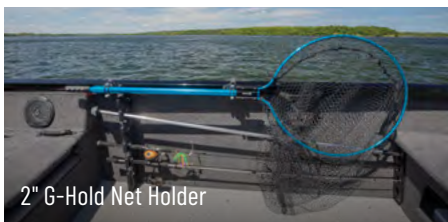
Drink Holder



Cutting Station



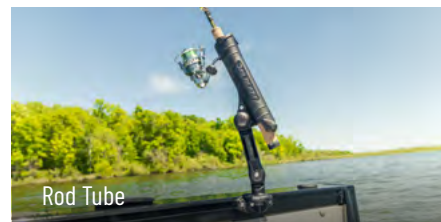
Downrigger Bracket



2" G-Hold Net Holder



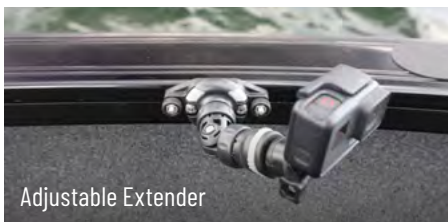
Gun Holder



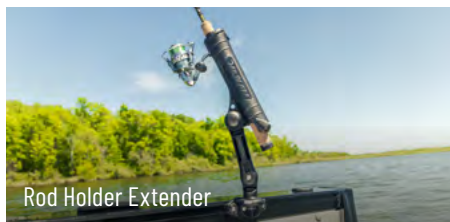
Rod Tube



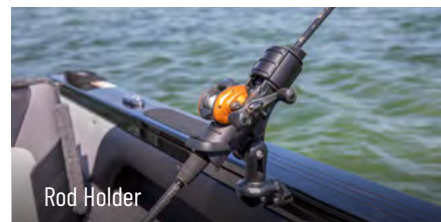
Fender Holder



Adjustable Extender



Rod Holder Extender



Rod Holder

[EXPLORE NOW](#)

**CRESTLINER**

# BUILD YOUR OWN BOAT

EXPLORE NOW



Not all processes, features and statements apply to every Crestliner boat model. All prices and specifications subject to change.

Crestliner reserves the right to discontinue models or change prices, specifications, materials, equipment, color or design at any time without notice and without incurring obligations. Some models are shown with optional features and equipment. Outboard model weights shown in this catalog reflect the approximate weight of the boat only, and do not include weights of the outboard motor or accessories installed. All boats meet or exceed United States Coast Guard regulations, applicable American Boat and Yacht Council standards and are certified by the National Marine Manufacturers Association. Our proven construction and its durability allow us to offer you one of the best warranties in the industry. Crestliner was the first of all aluminum boat manufacturers to offer a limited LIFETIME hull warranty to the original owner. All main seam welds are covered. Interior support construction carries a limited 10-year warranty. Plus, you get a limited 3-year bow-to-stern warranty on virtually everything else. It gets better... Crestliner's warranty is transferable! When it's time to upgrade to a new Crestliner, you have the option to transfer the warranty to the second owner. (Limited Lifetime warranty differs for CR Jon Boats.) Some restrictions apply. For complete details, a copy of our limited warranty is attached to each new boat or may be obtained from your Crestliner dealer or downloaded from [crestliner.com](http://crestliner.com). Many boats featured in this catalog are shown with available options. See your dealer for details. Every effort was made to ensure that this information was accurate at the time of printing. Crestliner assumes no responsibility for errors in type, in print or in photos. Please follow the rules of safe boating, be courteous to others and respect the marine environment. Special thanks to NMMA®, Onyx®, Mercury Marine®, Power-Pole®, and Ruttger's Bay Lake Resort.

©2024 Crestliner / A Brunswick boat company. Printed in USA